

German Dredger Services



Drilling Equipments and Tools for Piling Machines



German **D**redger **S**ervices

German Dredger Services GmbH
Brandstücken 18
22549 Hamburg

Tel.: +49 (0) 40 870 80 19 - 10

Fax: +49 (0) 40 870 80 19 - 13

E- Mail: info@german-dredger.com

Web: www.german-dredger.com

Content /

Augers / Burgular

Single Cut Soil Auger (SA-1)	01
Double Cut Soil Auger (SA-2)	02
Single Cut Rock Auger (LRA-1)	03
Double Cut Rock Auger (LRA-2)	04
Conical Heavy Duty Rock Auger (HDA-1)	05
Heavy Duty Rock Auger (RA-1)	06
Heavy Duty Rock Auger (RA-2)	07
Auxiliary Parts	08

Buckets

Single Bottom Double Cut Soil Bucket (LSB-2)	09
Double Bottom Single Cut Soil Bucket (SB-1)	10
Double Bottom Double Cut Soil Bucket (SB-2)	11
Double Bottom Single Cut Rock Bucket (RB-1)	12
Double Bottom Double Cut Rock Bucket (RB-2)	13
Double Bottom Double Cut Soil Bucket (SRB-2)	14
Centrifugal Soil Bucket (SC-2)	15
Centrifugal Rock Bucket (RC-2)	16
Double Bottom Double Cut Cleaning Bucket (CB-2)	17
Double Bottom Single Cut Cleaning Bucket (CB-1)	18

Core Barrels

Core Barrel (CB-E)	19
Core Barrel (CB-W)	20

Continuous Flight Augers (CFA)

CFA Auger with Rock Head (CFA-R2)	21
CFA Auger with Soil Head (CFA-S2)	22

Auxiliary Parts

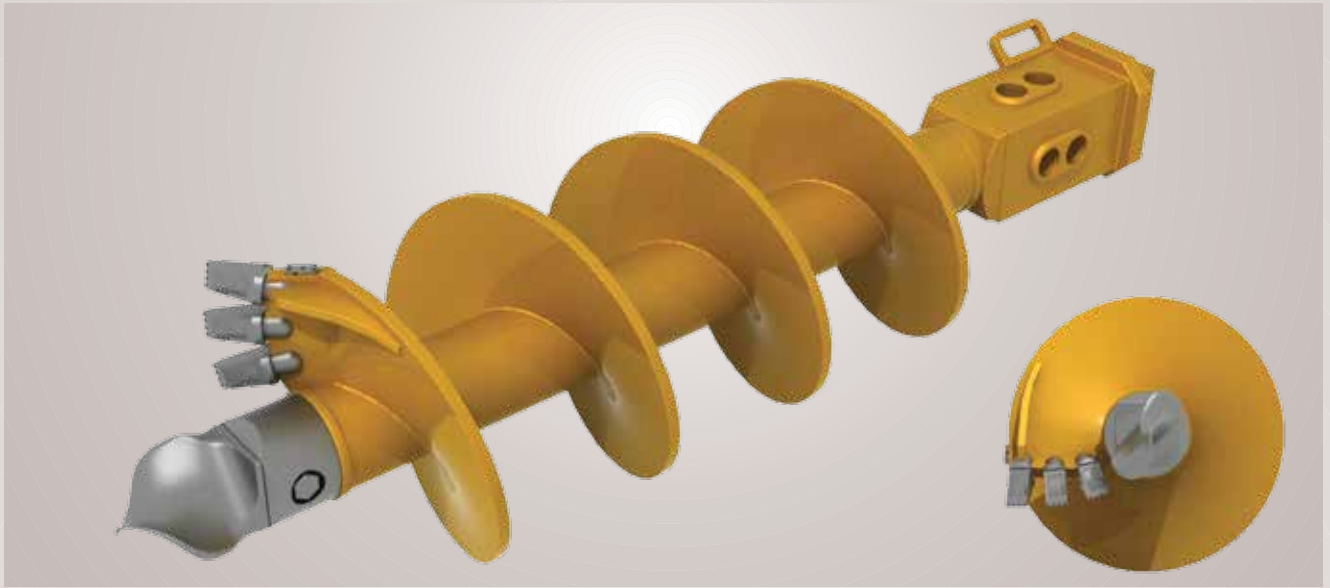
CFA Connection Joint (CFA-C)	23
CFA Extension (CFA-E)	24

Auxiliary Equipment

Concrete Casting Cone	25
Tremie Stands	26
Tremie Pipes	27
Casing	28
Casing Joints (CD)	29
Casing Driver (DA)	30
Casing Shoes (CS)	31
Wear Parts	32

Augers

Single Cut Soil Auger (SA-1)



Main Application:

Soft to stiff silt and clay, loose to medium dense sand and gravel

Features:

Kelly box: 130, 150 or 200 mm

Teeth type: FZ, ESCO or ETE

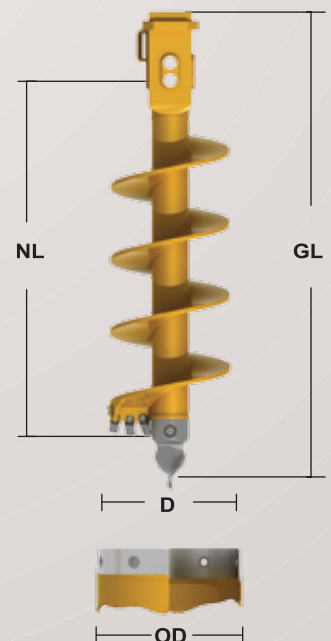
Fishtail: Standard

Wear protection: Hard Facing (Standard)

Wear strip: Optional

D (mm)	NL (mm) GL (mm)	OD (mm)
520		620
600		
650	750	
700		
780	880	
800		
900	1,000	
1,000		
1,060	1,180	
1,100	1,200	
1,180	1,300	
1,200		
1,350	1,500	
1,500	1,650	
1,650	1,800	
1,800		
1,830	2,000	
2,000		
2,320		
2,500		

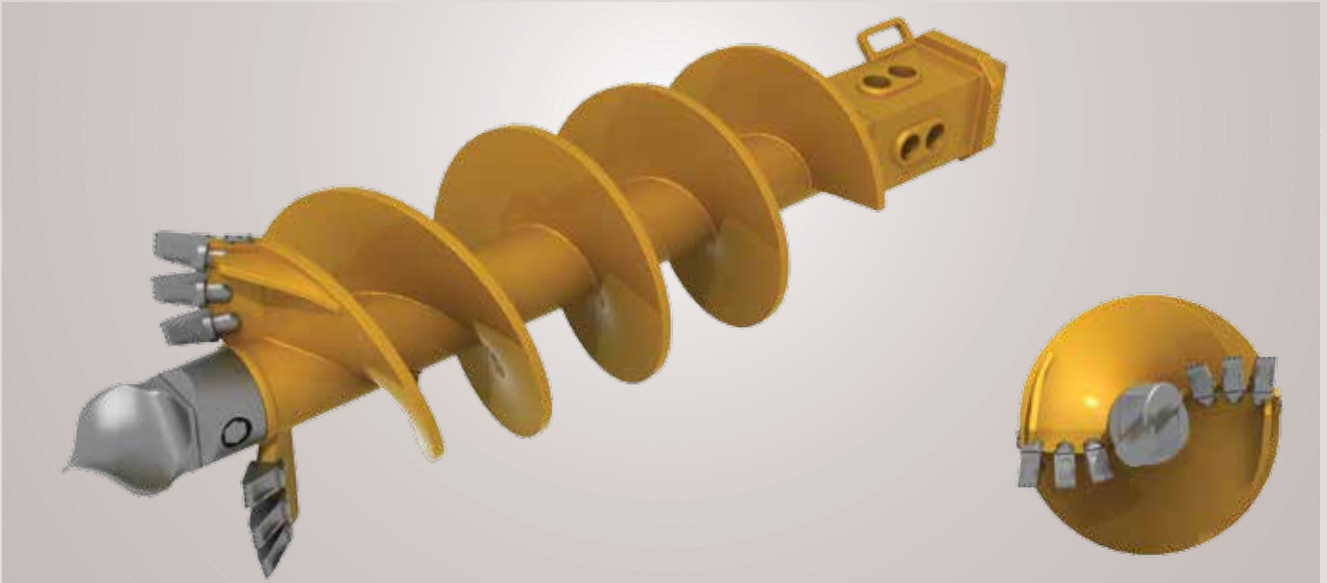
SA-1	
1700	2250
2315	2865
Weight (kg)	
630	770
670	835
690	850
730	900
780	970
790	980
810	1,010
880	1,100
940	1,190
980	1,230
1,020	1,270
1,100	1,355
1,185	1,470
1,260	1,630



Note: All dimensions and weights are given according to 200 mm kelly box

Augers

Double Cut Soil Auger (SA-2)



Main Application:

Soft to stiff silt and clay, loose to medium dense sand, gravel

SA-2 is recommended for uncased bores or for bigger diameters

Features:

Kelly box: 130, 150 or 200 mm

Teeth type: FZ, ESCO or ETE

Fishtail: Standard

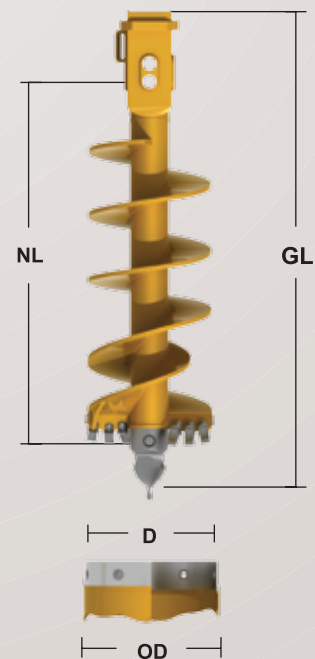
Wear protection: Hard Facing (Standard)

Wear strip: Optional

D (mm)	NL (mm) GL (mm)	OD (mm)
520		620
600		
650		750
700		
780		880
800		
900		1.000
1.000		
1.060		1.180
1.100		1.200
1.180		1.300
1.200		
1.350		1.500
1.500		1.650
1.650		1.800
1.800		
1.830		2.000
2.000		
2.320		
2.500		

SA-2	
1700	2250
2315	2865
Weight (kg)	

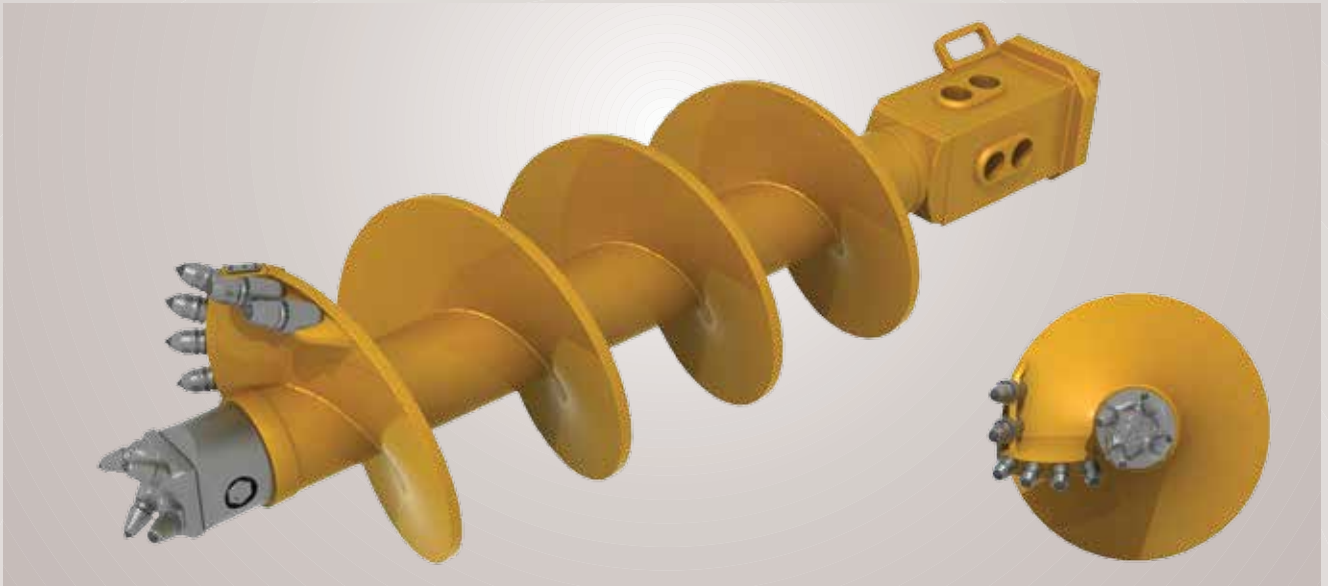
740	930
750	940
780	980
830	1.055
885	1.130
915	1.160
930	1.190
970	1.240
1.050	1.330
1.175	1.470
1.415	1.920
1.660	2.203
1.705	2.260
1.945	2.510
	2.950
	3.250



Note: All dimensions and weights are given according to 200 mm kelly box

Augers

Single Cut Rock Auger (LRA-1)



Main Application:

Very dense sand and gravel, weak rock (<5 Mpa)

Features:

Kelly box: 130, 150 or 200 mm

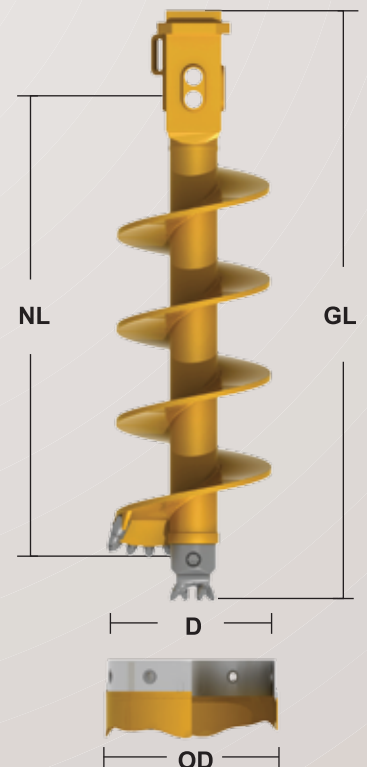
Chisel type: Round shank chisel, cutting edge and collar plate with round shank chisels

Pilot: Pilot bit RP4

Wear protection: Hard Facing (Standard)

Wear strip: Optional

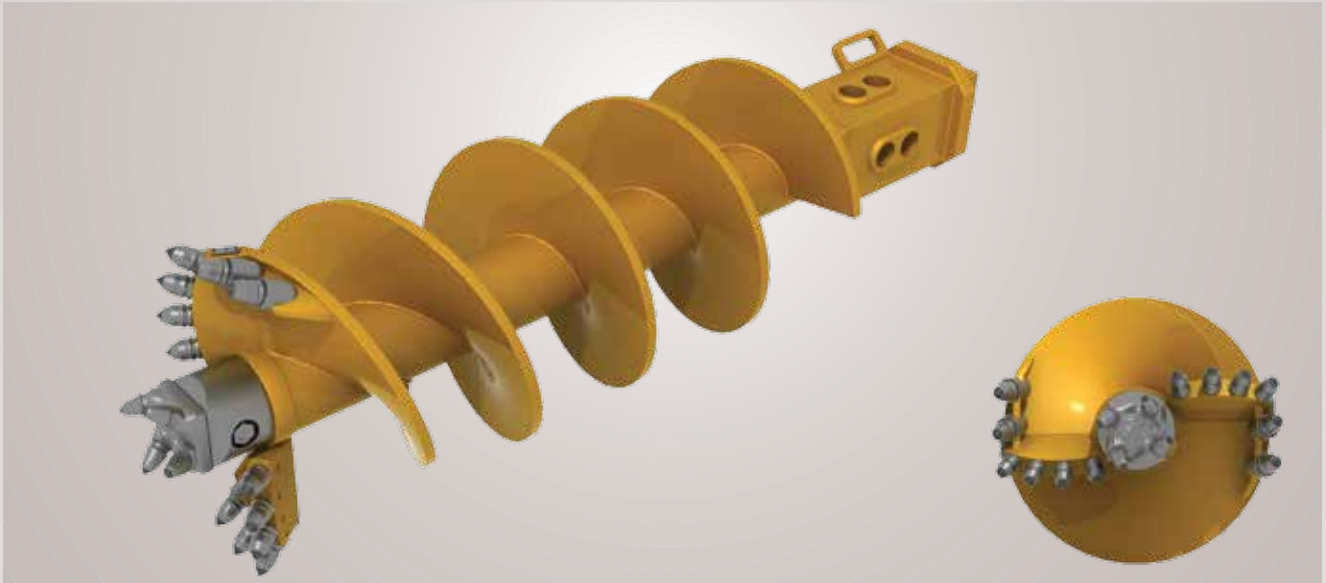
D (mm)	NL (mm) GL (mm)	LRA-1	
		1700	2250
		2240	2790
		Weight (kg)	
520	620	660	805
600		730	876
650	750	760	917
700		800	970
780	880	835	1.026
800		840	1.035
900	1.000	870	1.070
1.000		940	1.160
1.060	1.180	1.030	1.267
1.100	1.200	1.060	1.300
1.180	1.300	1.090	1.340
1.200		1.150	1.405
1.350	1.500	1.230	1.515
1.500	1.650	1.300	1.655
1.650	1.800		
1.800			
1.830	2.000		
2.000			
2.320			
2.500			



Note: All dimensions and weights are given according to 200 mm kelly box

Augers

Double Cut Rock Auger (LRA-2)



Main Application:

Very dense sand and gravel, weak rock (<5 Mpa)

LRA-2 is recommended in uncased bores or for bigger diameters and secant pile walls

Features:

Kelly box: 130, 150 or 200 mm

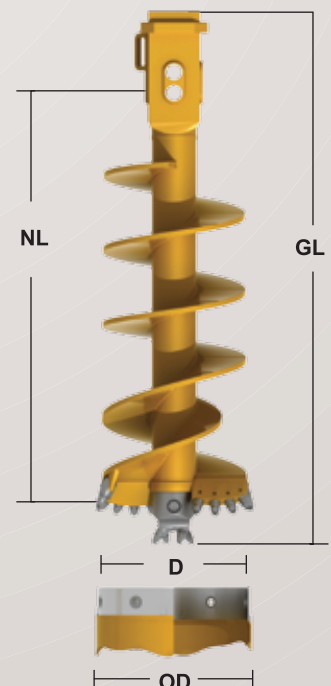
Chisel type: Round shank chisel, cutting edge and collar plate with round shank chisels

Pilot: Pilot bit RP4

Wear protection: Hard Facing (Standard)

Wear strip: Optional

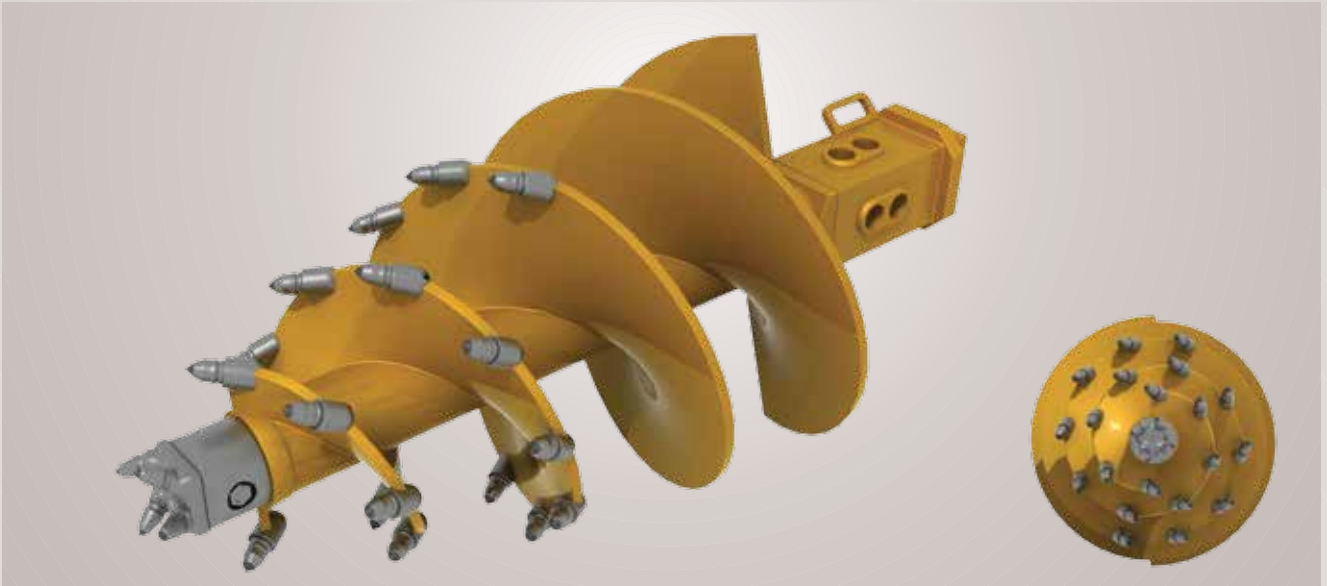
		LRA-2	
		NL (mm)	GL (mm)
		1700	2250
		2240	2790
		Weight (kg)	
D (mm)	OD (mm)		
520	620		
600			
650	750		
700			
780	880	880	1.030
800		890	1.050
900	1.000	930	1.130
1.000		1.000	1.230
1.060	1.180	1.070	1.320
1.100	1.200	1.110	1.345
1.180	1.300	1.150	1.370
1.200		1.220	1.480
1.350	1.500	1.320	1.560
1.500	1.650	1.450	1.840
1.650	1.800	1.690	2.290
1.800		1.930	2.575
1.830	2.000	1.980	2.630
2.000		2.220	2.880
2.320			3.350
2.500			3.520



Note: All dimensions and weights are given according to 200 mm kelly box

Augers

Conical Heavy Duty Rock Auger (HDA-1)



Main Application:

Weak to Moderately strong rock (75-125 Mpa)

Features:

Kelly box: 130, 150 or 200 mm

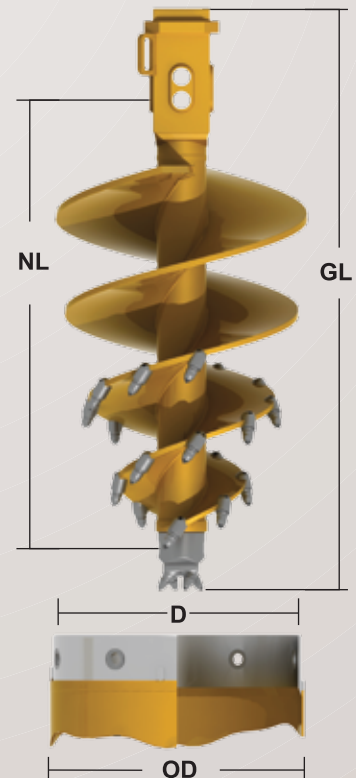
Chisel type: Round shank chisel fixed along the flights edge

Pilot: Pilot bit RP4

Wear protection: Hard Facing (Standard)

Wear strip: Optional

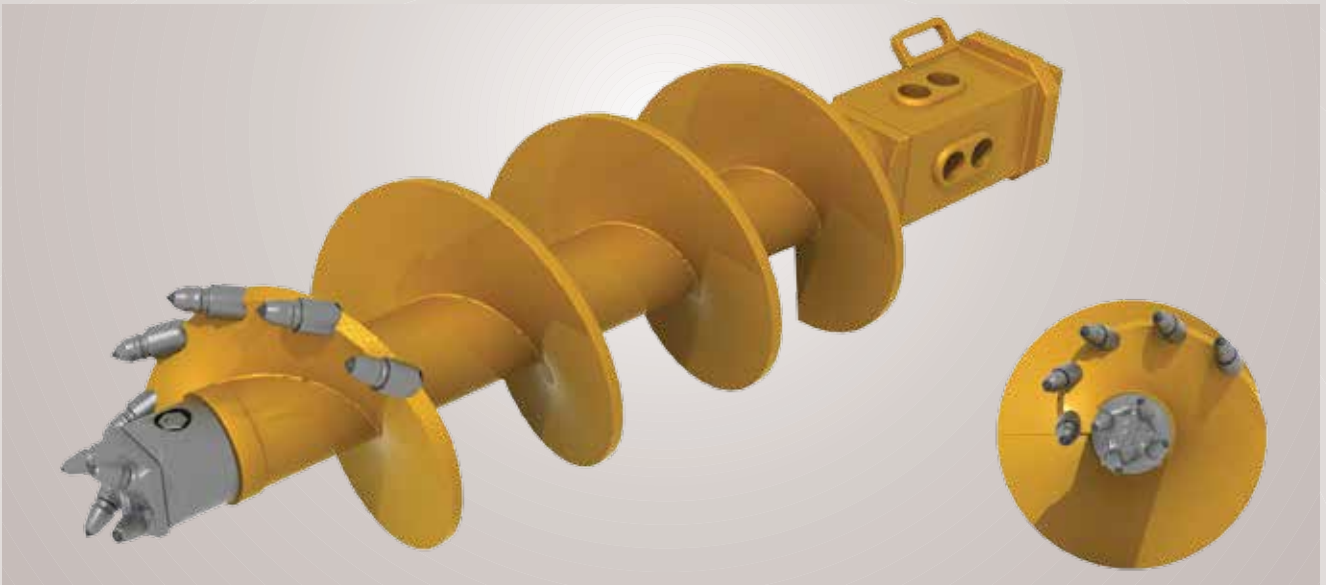
		HDA-1	
		1210	1760
		1750	2300
		Weight (kg)	
D (mm)	NL (mm) GL (mm)	OD (mm)	
520		620	480
600			620
650		750	535
700			560
780		880	605
800			610
900		1.000	635
1.000			710
1.060		1.180	752
1.100		1.200	774
1.180		1.300	796
1.200			808
1.350		1.500	872
1.500		1.650	972
1.650		1.800	
1.800			
1.830		2.000	
2.000			
2.320			
2.500			



Note: All dimensions and weights are given according to 200 mm kelly box

Augers

Heavy Duty Rock Auger (RA-1)



Main Application:

Weak to medium strong rock (12-100 Mpa)

Features:

Kelly box: 130, 150 or 200 mm

Chisel type: Round shank chisel fixed along the flights edge

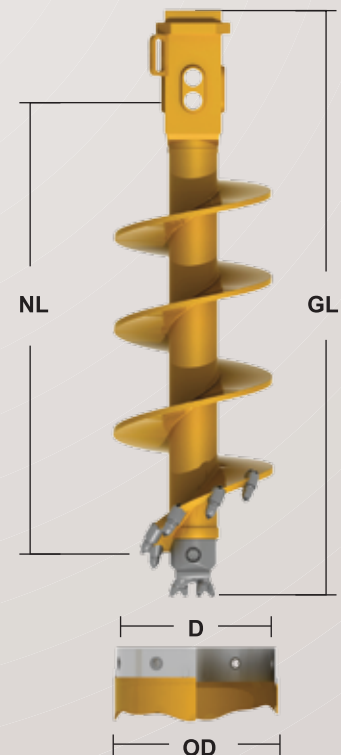
Pilot: Pilot bit RP4

Wear protection: Hard Facing (Standard)

Wear strip: Optional

D (mm)	NL (mm) GL (mm)	OD (mm)
520		620
600		
650		750
700		
780		880
800		
900		1.000
1.000		
1.060		1.180
1.100		1.200
1.180		1.300
1.200		
1.350		1.500
1.500		1.650
1.650		1.800
1.800		
1.830		2.000
2.000		
2.320		
2.500		

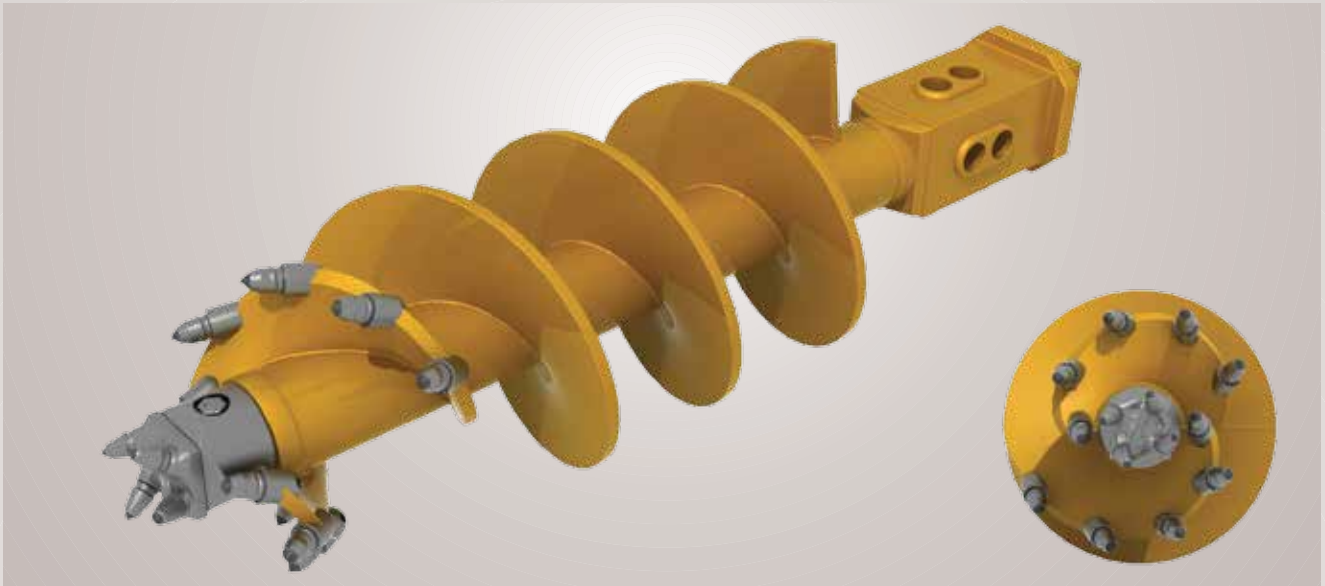
RA-1	
1700	2250
2240	2790
Weight (kg)	
600	750
625	770
660	830
695	870
755	950
761	955
790	980
890	1.070
940	1.185
968	1.218
995	1.252
1.010	1.280
1.090	1.400
1.215	1.620



Note: All dimensions and weights are given according to 200 mm kelly box

Augers

Heavy Duty Rock Auger (RA-2)



Main Application:

Weak to medium strong rock (12-100 Mpa)

RA-2 is recommended in uncased bores or for bigger diameters

Features:

Kelly box: 130, 150 or 200 mm

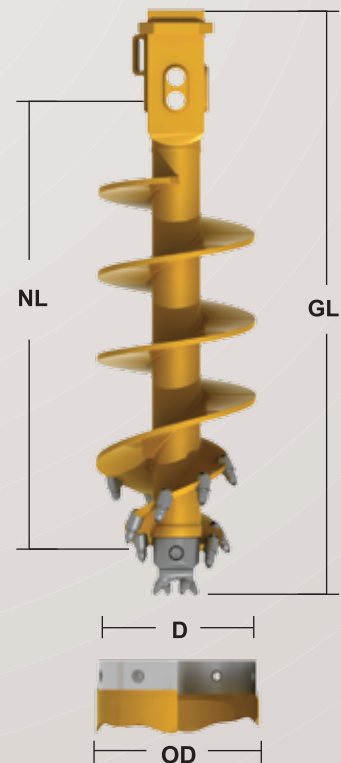
Chisel type: Round shank chisel fixed along the flights edge

Pilot: Pilot bit RP4

Wear protection: Hard Facing (Standard)

Wear strip: Optional

		RA-2	
		1700	2250
		2240	2790
		Weight (kg)	
D (mm)	NL (mm) GL (mm) OD (mm)		
520	620		
600			
650	750		
700			
780	880	768	968
800		775	976
900	1.000	813	1.013
1.000		866	1.082
1.060	1.180	930	1.175
1.100	1.200	958	1.209
1.180	1.300	985	1.242
1.200		1.000	1.263
1.350	1.500	1.118	1.409
1.500	1.650	1.276	1.630
1.650	1.800	1.570	1.572
1.800		1.845	1.680
1.830	2.000	1.900	1.700
2.000		2.050	1.950
2.320			2.356
2.500			2.570



Note: All dimensions and weights are given according to 200 mm kelly box

Auxiliary Parts

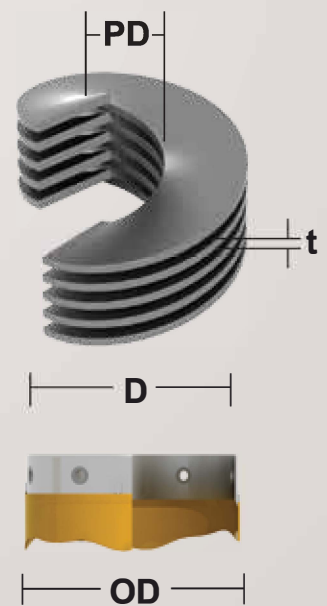
Auger Flights



Main Application:

Auger flight is manufactured as tailor made according to requirement of outer diameter (D), Internal pipe diameter (PD) and flight thickness of auger.

Auger Diameter D (mm)	Pile OD (mm)	Auger Pipe Diameter (PD) (mm)	Flight Thickness (t)					Weight (kg)
			20	25	30	40	50(mm)	
520	620	195	29	35	41	54	65	
600								
650	750	195	47	59	69	91	112	
700								
780	880	195	70	88	104	137	169	
800								
900	1.000	203	95	119	141	187	231	
1.000								
1.060	1.180	219	134	167	199	265	328	
1.100	1.200	219	150	188	224	298	370	
1.180	1.300	219	167	209	249	331	411	
1.200								
1.350	1.500	228	220	275	329	437	544	
1.500	1.650	228	273	341	408	543	676	
1.650	1.800	245	331	414	495	659	822	
1.800								
1.830	2.000	245	409	510	611	814	1.015	
2.000								
2.320								
2.500								



Note: All dimensions are recommended and special product is manufactured according to the requirement

Buckets

Single Bottom Double Cut Soil Bucket (LSB-2)



Main Application:

Loose to stiff cohesionless soil where the water table exists.

LSB-2 is recommended in uncased bores and for bigger diameters.

Features:

Kelly box: 130, 150 and 200 mm

Teeth type: FZ, ESCO or ETE

Fishtail: Standard

Ventilation hole: Optional

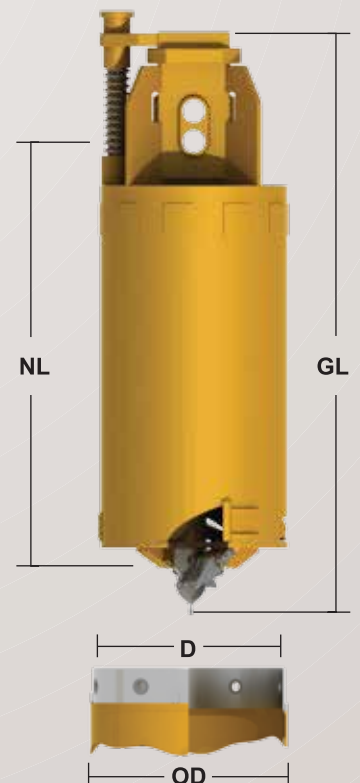
Body type: Tapered or cylindrical

Wear protection: Hard Facing (Standard)

Wear strip: Optional

D (mm)	NL (mm) GL (mm)	OD (mm)
520		620
600		
650		750
700		
780		880
800		
900		1.000
1.000		
1.060	1.180	
1.100	1.200	
1.180	1.300	
1.200		
1.350	1.500	
1.500	1.650	
1.650	1.800	
1.800		
1.830	2.000	
2.000		
2.320		
2.500		

LSB-2	
NL (mm)	GL (mm)
1550	1850
2300	2600
Weight (kg)	
1.620	1.750
1.707	1.842
1.794	1.934
1.855	1.995
2.057	2.207
2.217	2.387
2.565	2.750
3.705	3.915
3.795	4.005
4.120	4.350
4.935	5.495
5.510	5.795



Note: All dimensions and weights are given according to 200 mm kelly box

Buckets

Double Bottom Single Cut Soil Bucket (SB-1)



Main Application:

Soft to stiff silt and clay, loose to medium dense sand and gravel, up to coarse gravel. SB-1 is recommended especially in full cased bores

Features:

Kelly box: 130, 150 and 200 mm

Teeth type: FZ, ESCO or ETE

Fishtail: Standard

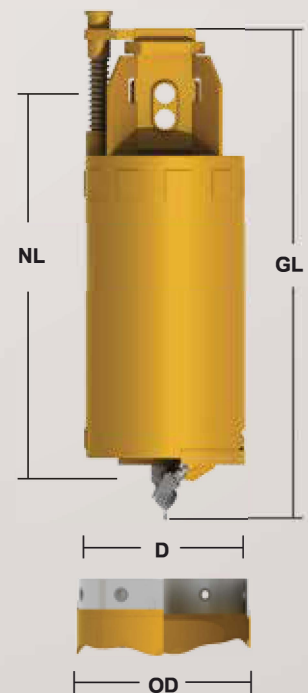
Ventilation hole: Optional

Body type: Tapered or cylindrical

Wear protection: Hard Facing (Standard)

Wear strip: Optional

D (mm)	OD (mm)	SB-1	
		1550 2300	1850 2600
		Weight (kg)	
520	620	656	733
600		750	893
650	750	824	908
700		894	894
780	880	1.006	1.107
800		1.040	1.140
900	1.000	1.195	1.310
1.000		1.380	1.500
1.060	1.180	1.515	1.593
1.100	1.200	1.608	1.712
1.180	1.300	1.702	1.830
1.200		1.770	1.930
1.350	1.500	2.033	2.196
1.500	1.650	2.290	2.460
1.650	1.800		
1.800			
1.830	2.000		
2.000			
2.320			
2.500			



Note: All dimensions and weights are given according to 200 mm kelly box

Buckets

Double Bottom Double Cut Soil Bucket (SB-2)



Main Application:

Soft to stiff silt and clay, loose to medium dense sand and gravel.

SB-2 is recommended in cased / uncased and for bigger diameter piles.

Features:

Kelly box: 130, 150 and 200 mm

Teeth type: FZ, ESCO or ETE

Fishtail: Standard

Ventilation hole: Optional

Body type: Tapered or cylindrical

Wear protection: Hard Facing (Standard)

Wear strip: Optional

D (mm)	OD (mm)
520	620
600	
650	750
700	
780	880
800	
900	1.000
1.000	
1.060	1.180
1.100	1.200
1.180	1.300
1.200	
1.350	1.500
1.500	1.650
1.650	1.800
1.800	
1.830	2.000
2.000	
2.320	
2.500	

SB 2	
1550	1850
2300	2600
Weight (kg)	
1.620	1.750
1.707	1.842
1.794	1.934
1.855	1.995
2.057	2.207
2.217	2.387
2.565	2.750
3.705	3.915
3.795	4.005
4.120	4.350
4.935	5.495
5.510	5.795



Note: All dimensions and weights are given according to 200 mm kelly box

Buckets

Double Bottom Single Cut Rock Bucket (RB-1)



Main Application:

Very dense sand and gravel, weak rock and up to coarse gravel -

RB-1 is recommended especially in full cased bores

Features:

Kelly box: 130, 150 and 200 mm

Chisel type: Round shank chisel, cutting edge and collar plate with round shank chisels Fishtail

Pilot: Standard

Ventilation hole: Optional

Body type: Tapered or cylindrical

Wear protection: Hard Facing (Standard)

Wear strip: Optional

		RB-1	
		1550	1850
		2300	2600
		Weight (kg)	
NL (mm)	GL (mm)		
D (mm)	OD (mm)		
520	620	681	758
600		780	923
650	750	853	937
700		932	1.022
780	880	1.040	1.141
800		1.076	1.180
900	1.000	1.258	1.373
1.000		1.437	1.557
1.060	1.180	1.518	1.618
1.100	1.200	1.600	1.678
1.180	1.300	1.802	1.930
1.200		1.885	2.045
1.350	1.500	2.152	2.315
1.500	1.650	2.450	2.620
1.650	1.800		
1.800			
1.830	2.000		
2.000			
2.320			
2.500			



Note: All dimensions and weights are given according to 200 mm kelly box

Buckets

Double Bottom Double Cut Rock Bucket (RB-2)



Main Application:

Very dense sand and gravel, weak rock.

It is recommended in uncased bores or for bigger diameters and for secant pile walls.

Features:

Kelly box: 130, 150 or 200 mm

Chisel type: Round shank chisel, cutting edge and collar plate with round shank chisels

Pilot: Pilot bit RP4

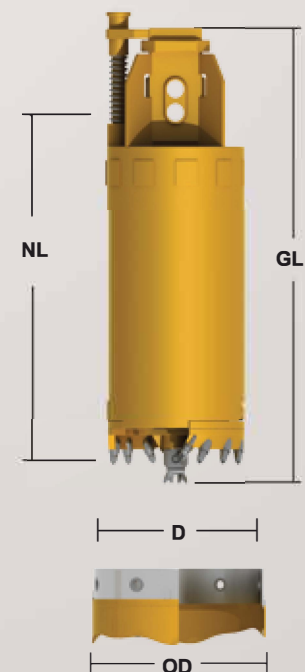
Ventilation hole: Optional

Body type: Tapered or cylindrical

Wear protection: Hard Facing (Standard)

Wear strip: Optional

		RB-2	
		1550	1850
		2300	2600
		Weight (kg)	
D (mm)	OD (mm)		
520	620		
600			
650	750		
700			
780	880		
800			
900	1.000		
1.000			
1.060	1.180	1.680	1.810
1.100	1.200	1.760	1.895
1.180	1.300	1.840	1.980
1.200		1.885	2.025
1.350	1.500	2.130	2.280
1.500	1.650	2.330	2.500
1.650	1.800	2.750	2.935
1.800		3.680	3.890
1.830	2.000	3.705	3.915
2.000		4.240	4.470
2.320		5.125	5.385
2.500		5.620	5.905



Note: All dimensions and weights are given according to 200 mm kelly box

Buckets

Double Bottom Double Cut Soil Bucket (SRB-2)



Main Application:

Soft to hard silt and clay, loose to dense sand and gravel

SRB-2 is recommended in uncased bores or for bigger diameters and for secant pile walls

Features:

Kelly box: 130, 150 or 200 mm

Teeth type: FZ, ETE or ESCO and Chisel bit

Ventilation: Optional

Wear protection: Hard Facing (Standard)

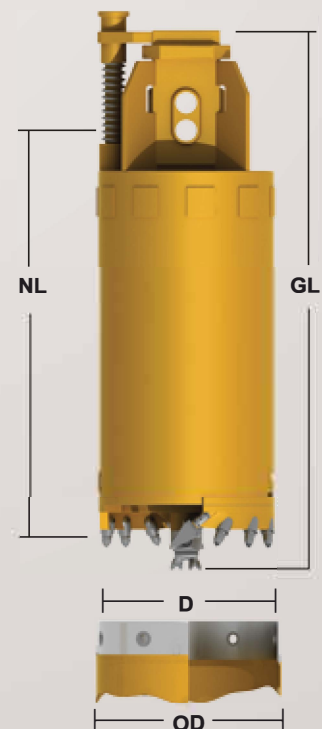
Wear strip: Optional

Body type: Tapered or cylindrical

D (mm)	NL (mm) GL (mm)	OD (mm)
520		620
600		
650		750
700		
780		880
800		
900		1.000
1.000		
1.060		1.180
1.100		1.200
1.180		1.300
1.200		
1.350		1.500
1.500		1.650
1.650		1.800
1.800		
1.830		2.000
2.000		
2.320		
2.500		

SRB-2	
1550	1850
2300	2600
Weight (kg)	

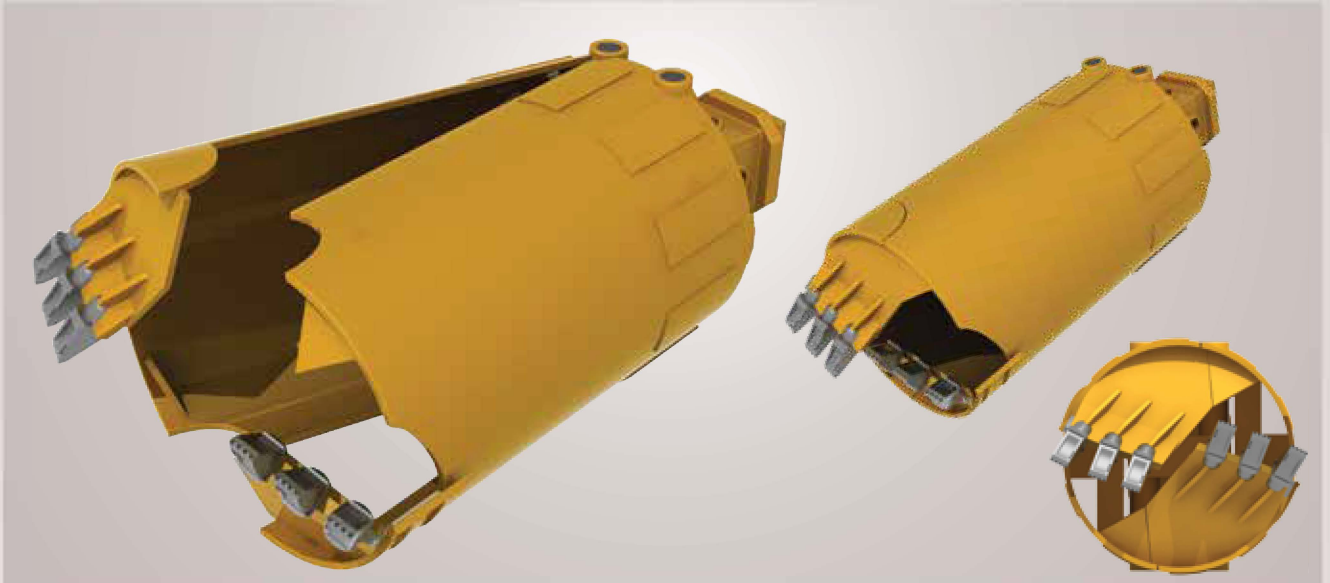
1 680	1 810
1 772	1 908
1 865	2 005
1 900	2 040
2 077	2 227
2 265	2 435
2 705	2 890
3 720	3 930
3 750	3 960
4 260	4 490
4 955	5 215
5 510	5 795



Note: All dimensions and weights are given according to 200 mm kelly box

Buckets

Centrifugal Soil Bucket (SC-2)



Main Application:

Centrifugal bucket is principally designed to drill a plastic clay and highly weathered soil or rock where there is a material extraction problem for conventional bucket types.

Highly plastic cohesive soft to stiff clay, silty sandy clay.

Features:

Kelly box: 130, 150 or 200 mm

Teeth type: FZ, ETE or ESCO

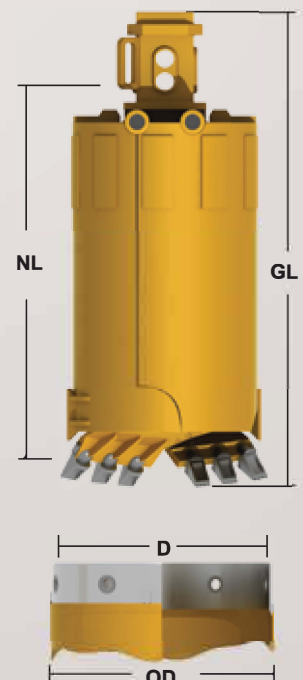
Wear protection: Hard Facing (Standard)

Wear strip: Optional

Body type: Tapered or cylindrical

D (mm)	NL (mm) GL (mm)	OD (mm)
520		620
600		
650		750
700		
780		880
800		
900		1.000
1.000		
1.060		1.180
1.100		1.200
1.180		1.300
1.200		
1.350		1.500
1.500		1.650
1.650		1.800
1.800		
1.830		2.000
2.000		
2.320		

SC-2	
1200	1300
1700	1800
Weight (kg)	
460	500
550	595
590	637
635	686
720	781
740	805
825	890
935	1.010
1.040	1.123
1.095	1.180
1.150	1.240
1.315	1.420
1.485	1.604



Note: All dimensions and weights are given according to 200 mm kelly box

Buckets

Centrifugal Rock Bucket (RC-2)



Main Application:

Centrifugal bucket is principally designed to drill a plastic clay and highly weathered soil or rock where there is a material extraction problem for conventional bucket types.

Weak-Moderately strong and weathered rocks

Features:

Kelly box: 130, 150 or 200 mm

Chisel type: Chisel with collar plate

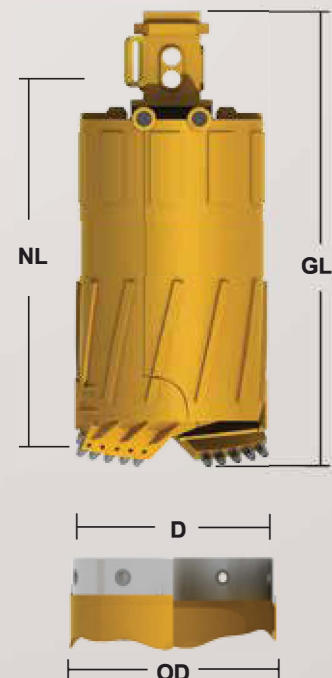
Body type: Tapered or cylindrical

Wear protection: Hard Facing (Standard)

Wear strip: Optional

D (mm)	NL (mm) GL (mm)	OD (mm)
520		620
600		
650	750	
700		
780	880	
800		
900	1.000	
1.000		
1.060	1.180	
1.100	1.200	
1.180	1.300	
1.200		
1.350	1.500	
1.500	1.650	
1.650	1.800	
1.800		
1.830	2.000	
2.000		
2.320		
2.500		

RC-2	
1200	1300
1700	1800
Weight (kg)	
460	500
550	595
590	637
635	686
720	781
740	805
825	890
935	1.010
1.040	1.123
1.095	1.180
1.150	1.240
1.315	1.420
1.485	1.604



Note: All dimensions and weights are given according to 200 mm kelly box

Buckets

Double Bottom Double Cut Cleaning Bucket (CB-2)



Main Application:

Cleaning the bottom of the pile shaft before reinforcement installation and concrete casting.

Features:

Kelly box: 130, 150 and 200 mm

Ventilation hole: Optional

Body type: Tapered or cylindrical

Wear protection: Hard Facing (Standard)

Wear strip: Optional

D (mm)	OD (mm)	(CB-2)	
		1550	1850
		2100	2400
		Weight (kg)	
520	620	614	691
600		709	852
650	750	782	866
700		850	940
780	880	959	1.060
800		990	1.095
900	1.000	1.141	1.256
1.000		1.327	1.447
1.060	1.180	1.474	1.552
1.100	1.200	1.563	1.666
1.180	1.300	1.652	1.780
1.200		1.714	1.874
1.350	1.500	1.984	2.147
1.500	1.650	2.227	2.397
1.650	1.800		
1.800			
1.830	2.000		
2.000			
2.320			
2.500			



Note: All dimensions and weights are given according to 200 mm kelly box

Buckets

Double Bottom Single Cut Cleaning Bucket (CB-1)



Main Application:

Cleaning the bottom of the pile shaft before reinforcement installation and concrete casting.

Features:

Kelly box: 130, 150 and 200 mm

Ventilation hole: Optional

Body type: Tapered or cylindrical

Wear protection: Hard Facing (Standard)

Wear strip: Optional

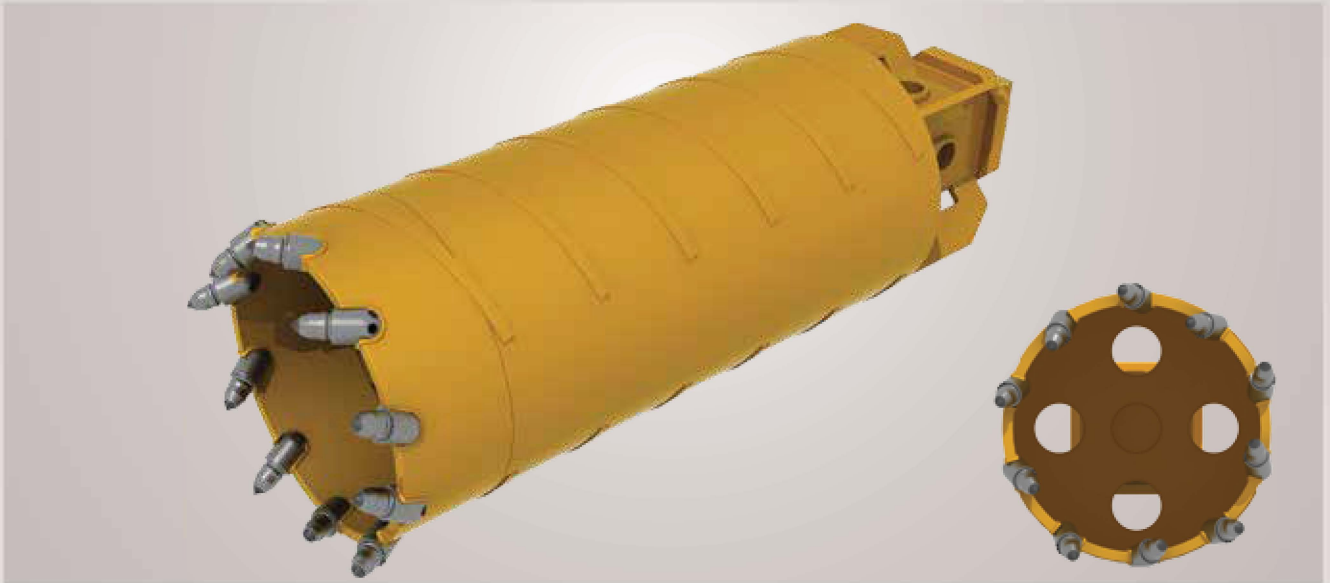
D (mm)	OD (mm)	CB-1	
		NL (mm) GL (mm)	Weight (kg)
520	620	1550 2100	614
600		1850 2400	691
650	750		709
700			782
780	880		852
800			866
800			850
900	1.000		940
1.000			959
1.060	1.180		990
1.100	1.200		1.095
1.180	1.300		1.141
1.200			1.256
1.350	1.500		1.327
1.500	1.650		1.447
1.650	1.800		1.474
1.800			1.552
1.830	2.000		1.563
2.000			1.666
2.320			1.652
2.500			1.714
			1.780
			1.874
			1.984
			2.147
			2.227
			2.397



Note: All dimensions and weights are given according to 200 mm kelly box

Core Barrels

Core Barrel (CB-E)



Main Application:

Up to strong rock (100 Mpa) suitable for cutting through fissured rock

Features:

Kelly box: 130, 150 and 200 mm

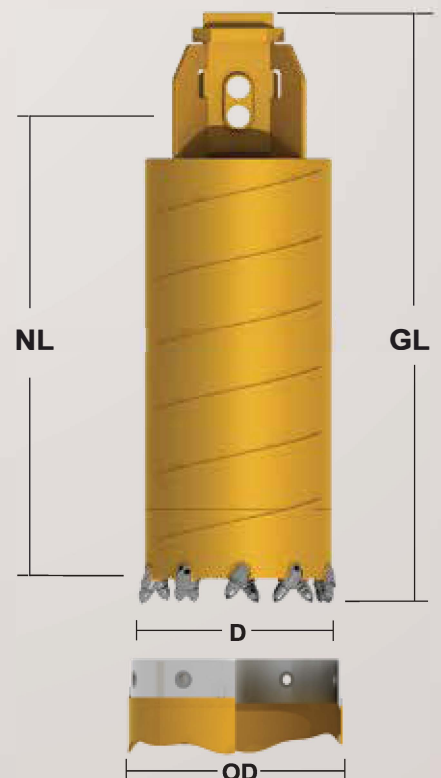
Chisel type: Cutting ring with staggered arrangement of round shank chisels.

Chiselholders are welded to the base body. The round shank chisels can be easily replaced when using suitable tools.

Wear Strips: Standard

Body Type: Cylindrical

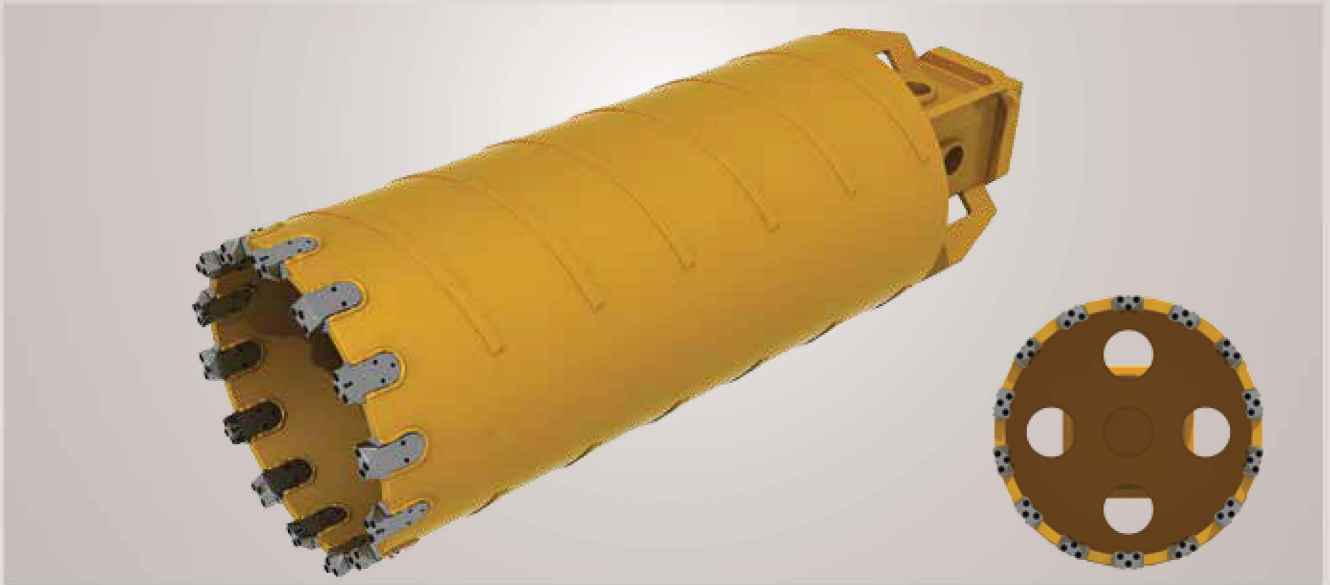
D (mm)	NL (mm)	OD (mm)	CB-E	
	GL (mm)		1475	1825
			1815	2215
			Weight (kg)	
520		620	575	
600			650	
650		750	705	
700			750	
780		880	780	
800				930
900		1.000		955
1.000				1.080
1.060		1.180		1.200
1.100		1.200		1.235
1.180		1.300		1.270
1.200				1.440
1.350		1.500		1.470
1.500		1.650		1.680
1.650		1.800		1.880
1.800				2.090
1.830		2.000		2.200
2.000				2.600
2.320				2.995
2.500				3.265



Note: All dimensions and weights are given according to 200 mm kelly box

Core Barrels

Core Barrel (CB-W)



Main Application:

Up to strong rock (100 Mpa) and lightly reinforced concrete

Features:

Kelly box: 130, 150 and 200 mm

Chisel Type: Cutting ring with tungsten carbide armoured blocks.

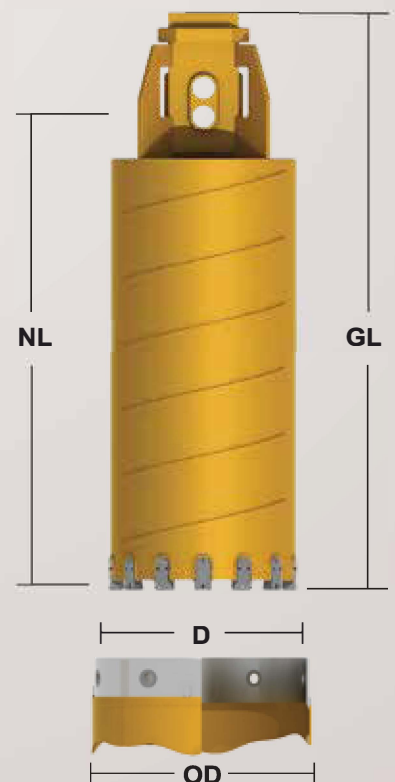
The block holders are welded into the base ring of the core barrel.

The blocks are secured with a pin and can be easily replaced.

Wear Strips: Standard

Body Type: Cylindrical

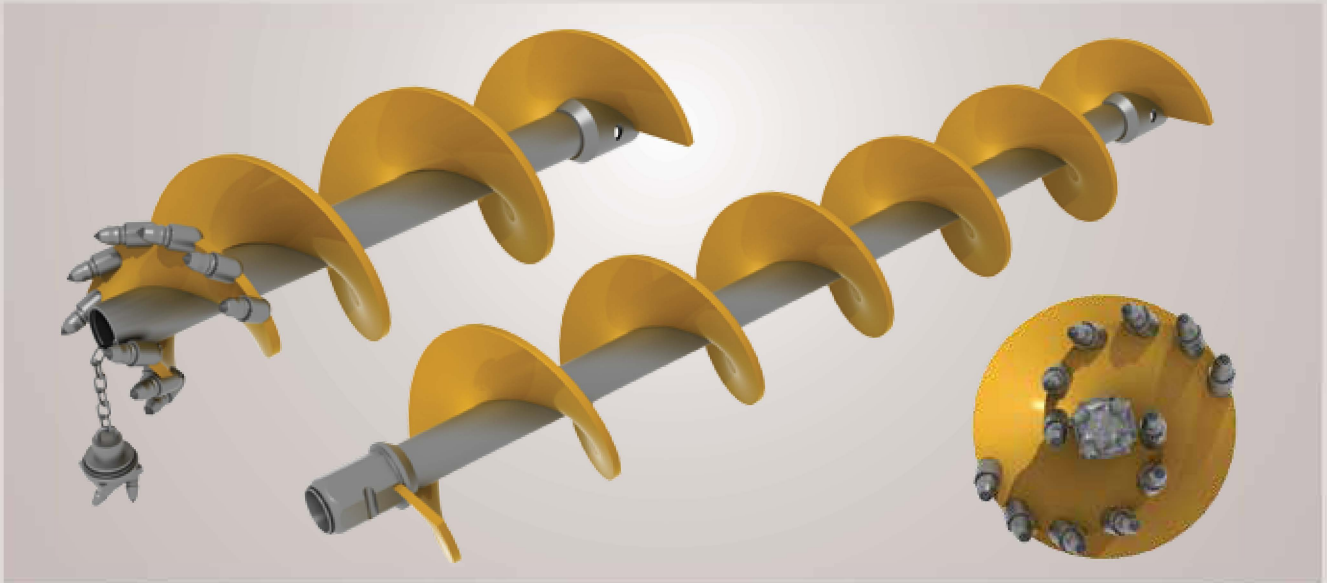
		CB-W	
		1300	1600
		1700	2000
		Weight (kg)	
NL (mm)	OD (mm)		
GL (mm)			
520	620	575	
600		570	
650	750	595	
700		645	
780	880		835
800			860
900	1.000		965
1.000			1.070
1.060	1.180		1.135
1.100	1.200		1.212
1.180	1.300		1.290
1.200			1.315
1.350	1.500		1.500
1.500	1.650		1.690
1.650	1.800		1.880
1.800			2.155
1.830	2.000		2.210
2.000			2.520



Note: All dimensions and weights are given according to 200 mm kelly box

Continuous Flight Augers (CFA)

CFA Auger with Rock Head (CFA-R2)



Main Application:

Very dense sand and gravel, weak rock (<5 Mpa)

Features:

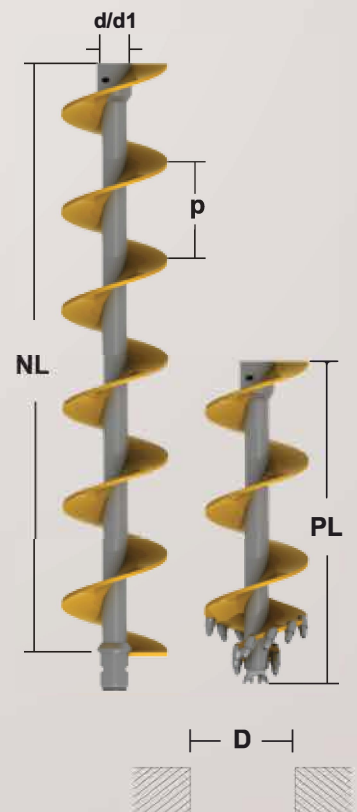
Joint: Hexagonal male-female joint

Chisel type: Round Shank Chisel fixed along the flight edge

Wear protection: Hard Facing (Standard)

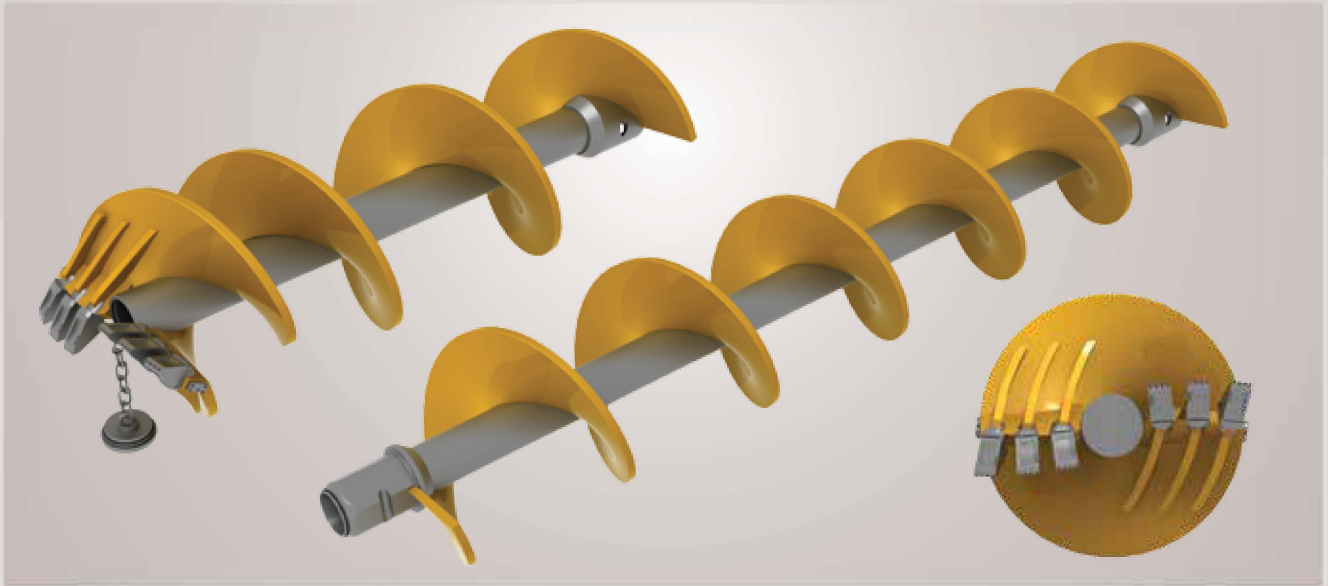
Wear strip: Optional

CFA Features (CFA-R2) D (mm)	CFA (NL)		CFA-Pilot (PL)		CFA Flight		CFA Tube	
	3000 Weight (kg)	6000 Weight (kg)	1000	1500	(mm)		d	d1
400	662	1.325	442	662	350	15	178	128
450								
500	757	1.514	505	757	400	15	178	128
550								
600	1.064	2.128	709	1.064	500	20	178	128
650								
700	1.102	2.205	735	1.102	600	20	178	128
750								
800	1.185	2.370	790	1.185	600	20	178	128
850								
900	1.252	2.505	835	1.252	600	20	178	128
950								
1.000	1.307	2.615	872	1.307	600	20	178	128
1.100	1.702	3.403	1.134	1.702	600	25	203	143
1.200	1.753	3.506	1.169	1.753	600	25	203	143



Continuous Flight Augers (CFA)

CFA Auger with Soil Head (CFA-S2)



Main Application:

Soft to stiff silt and clay, loose to medium dense sand and gravel

Features:

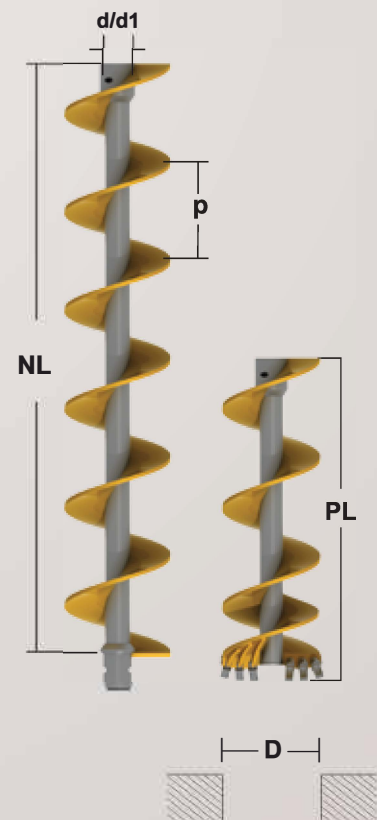
Joint: Hexagonal male-female joint

Teeth type: FZ, ESCO or ETE

Wear protection: Hard Facing (Standard)

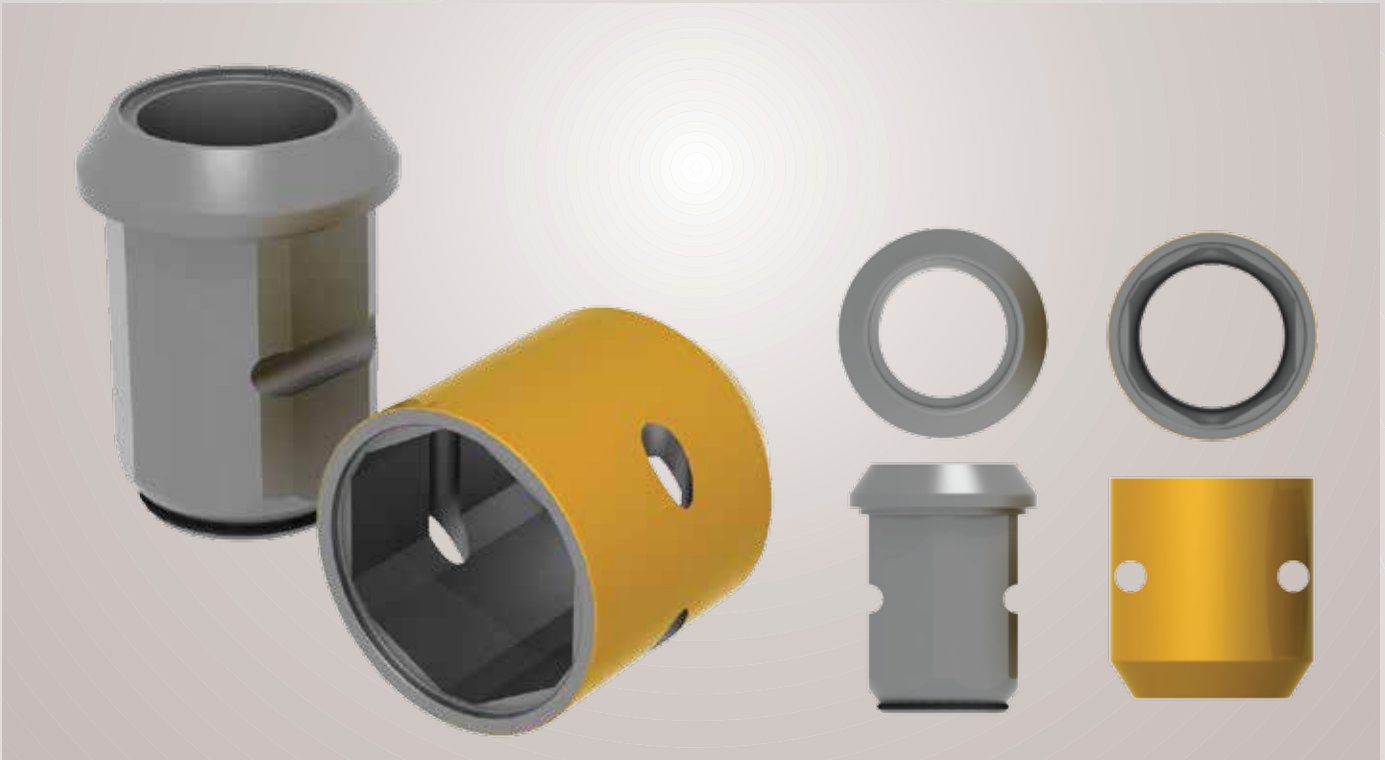
Wear strip: Optional

CFA Features (CFA-S2) D (mm)	CFA (NL)		CFA-Pilot (PL)		CFA Flight		CFA Tube	
	3000 Weight (kg)	6000 Weight (kg)	1000	1500	p (mm)	t (mm)	d (mm)	d1 (mm)
400	662	1.325	442	662	350	15	178	128
450								
500	757	1.514	505	757	400	15	178	128
550								
600	1.064	2.128	709	1.064	500	20	178	128
650								
700	1.102	2.205	735	1.102	600	20	178	128
750								
800	1.185	2.370	790	1.185	600	20	178	128
850								
900	1.252	2.505	835	1.252	600	20	178	128
950								
1.000	1.307	2.615	872	1.307	600	20	178	128
1.100	1.702	3.403	1.134	1.702	600	25	203	143
1.200	1.753	3.506	1.169	1.753	600	25	203	143



Auxiliary Parts

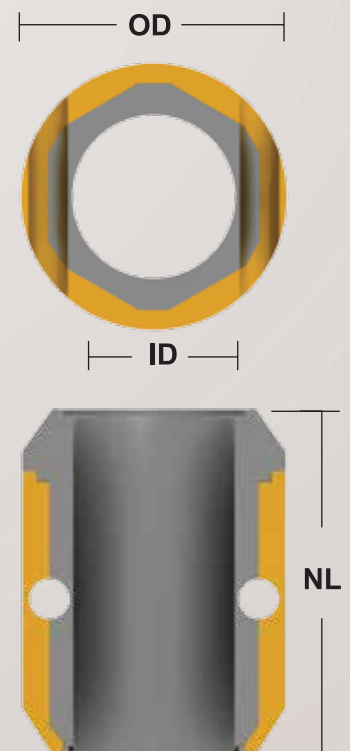
CFA Connection Joint (CFA-C)



Main Application:

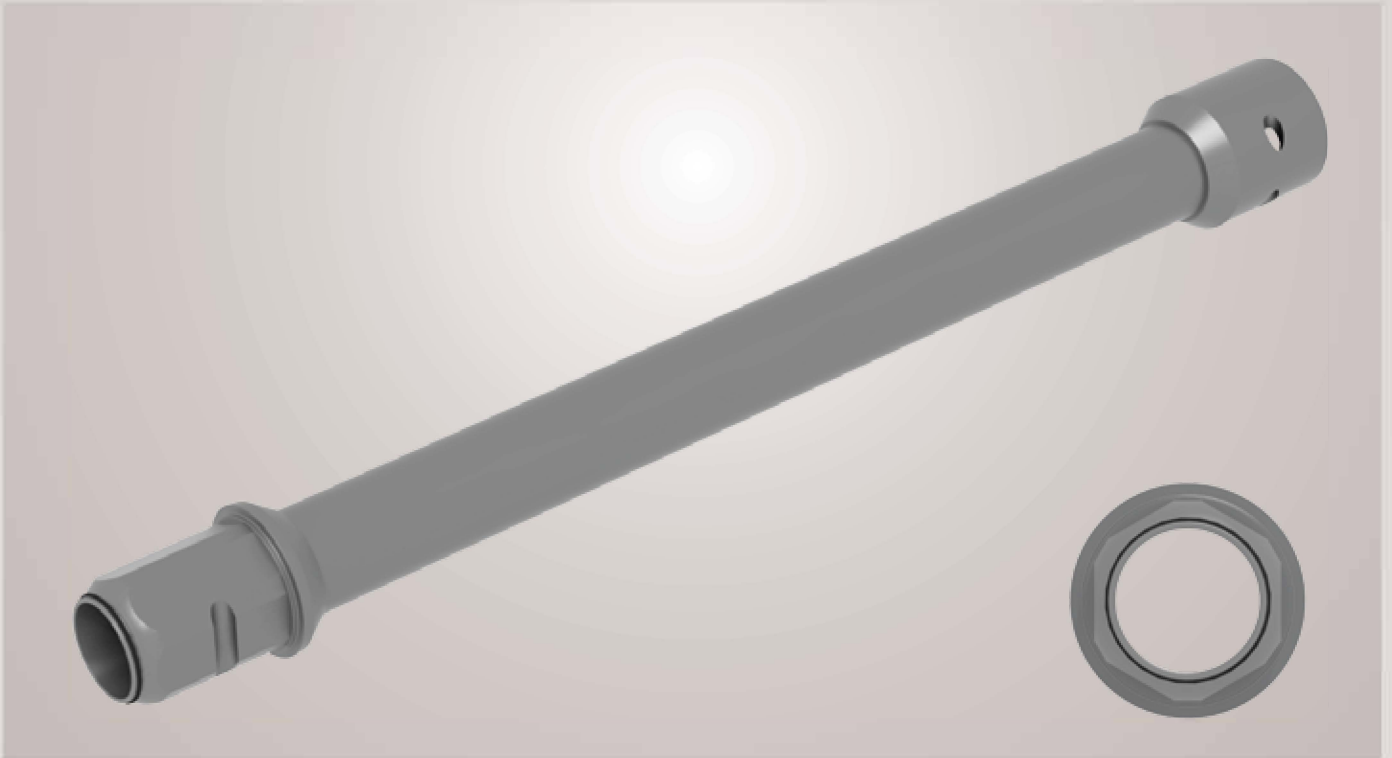
Joints are designed according to CFA diameter and rig power

Joint dimension OD (mm)	(CFA-C) ID (mm)	Length NL (mm)	Joint Properties		Weight W (kg)
			Torque T (Nm)	Pull force F (N)	
Joint 4" 200	100	300	18.000	40.000	60
Joint 5" 240	125	320	20.000	40.000	90
Joint 6" 280	160	330	22.000	50.000	120
Joint 7" 320	180	350	24.000	60.000	160



Auxiliary Parts

CFA Extension (CFA-E)



Main Application:

There is extension between the concrete pump connection and CFA auger

CFA Extension (CFA-E)		Dimension
OD (mm)	ID (mm)	NL (mm)
Joint 4" 200	100	100 - 1500 mm
Joint 5" 240	125	100 - 1500 mm
Joint 6" 280	160	100 - 1500 mm
Joint 7" 320	180	100 - 1500 mm



Auxiliary Equipment

Concrete Casting Cone

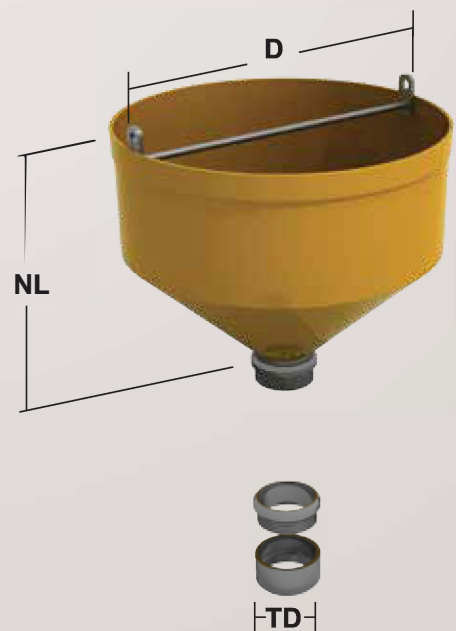


Main Application:

It is recommended according to pile diameter and steel cage extension above the working platform level

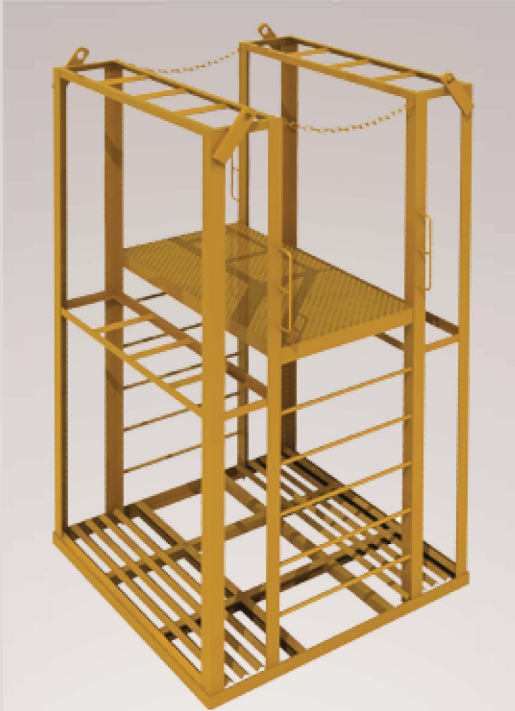
NL (mm)	D (mm)	TD (mm)
245		
273		
300		

1100	1100
1000	1250
195	230
200	235
205	240

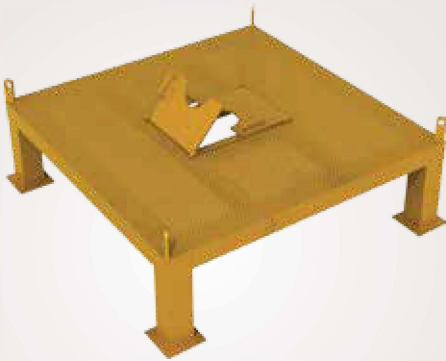


Auxiliary Equipment

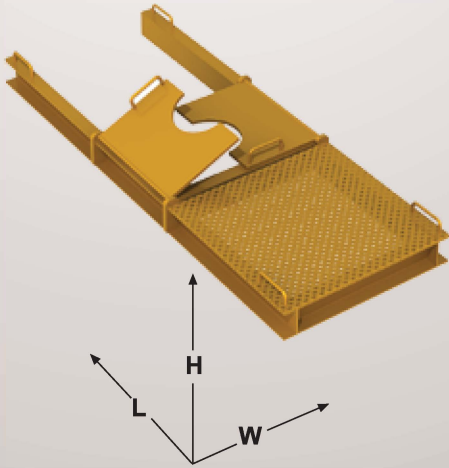
Tremie Pipes



Tremie Stand (TS)	TS-6	TS-3	TS-2
H (mm)	6.000	3.000	2.000
W (mm)	2.000	2.000	2.000
L (mm)	1.500	1.500	1.500
Weight (kg)	1.800	1.200	1.000



Tremie Stand (TB)	TB-200	TB-150	TB-100
H (mm)	500-1.000	500-1000	500-1000
W (mm)	2.000	1.500	1.000
L (mm)	2.000	1.500	1.000
Weight (kg)	300	250	200

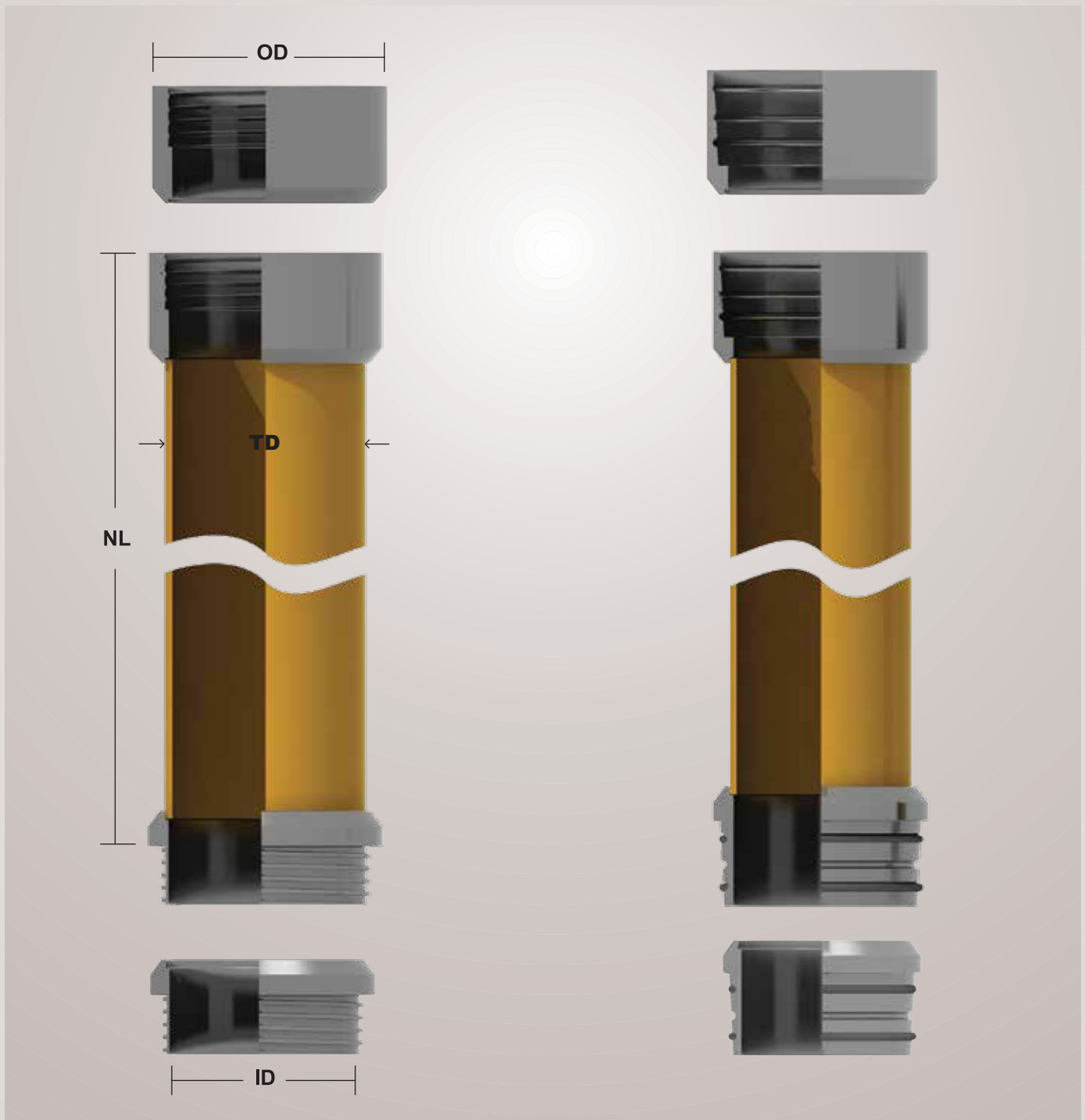


Tremie Stand (TK)	TK-200	TK-150	TK-100
H (mm)	140	120	100
W (mm)	500	500	500
L (mm)	2.000	1.500	1.000
Weight (kg)	130	105	80

Note: Special production is possible according to requirement

Auxiliary Equipment

Tremie Pipes

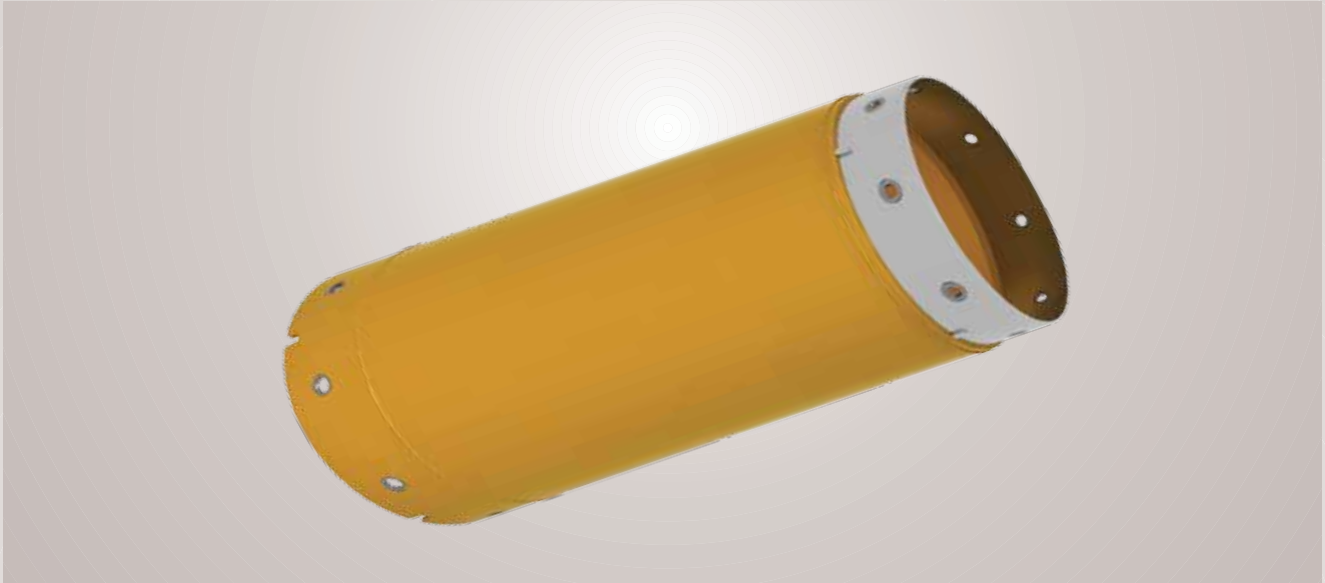


NL (mm)			Tremie with threaded (TT)			Tremie with wire cable (TC)		
OD	ID (mm)	TD	1.000	2.000	3.000	1.000	2.000	3.000
			Weight (kg)			Weight (kg)		
245	195	219	176	251	474	176	251	474
273	223	245	198	281	532	198	281	532
300	250	273	220	313	593	220	313	593

Note: Special production is possible according to requirement

Auxiliary Equipment

Casing



Main Application:

The use of powerfull rotary drives or the use of oscilators requires the application of heavy duty casings.

Teknofor offers two types of casings;

Double walled casings

Single walled casings

Double walled casings can be used universally, as they are designed especially for transmitting high rotational and vertical forces as created by the rig rotary drives or oscillations.

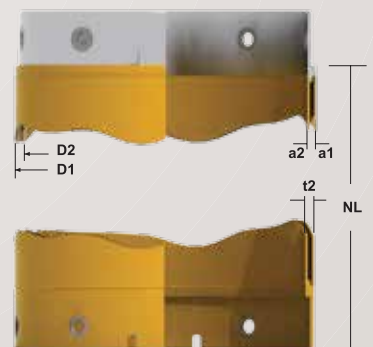
The use of double walled casings ensures a flush drill string.

Single walled casings can be used for applications where weight reduction is important.

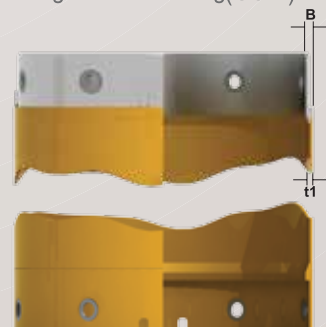
Double walled casings

D1/D2 (mm)	Net length NL(m)						a1 mm	a2 mm	t2 mm	Joints (nos)
	1m	2m	3m	4m	5m	6m				
620/540	403	739	1074	1411	1747	2081	12	8	40	8
750/670	492	902	1311	1722	2131	2540	12	8	40	10
880/800	585	1069	1552	2036	2520	3005	12	8	40	10
1000/920	669	1221	1773	2326	2877	3429	12	8	40	10
1180/1100	844	1580	2316	3052	3787	4522	16	8	40	12
1200/1120	872	1620	2370	3120	3870	4620	16	8	40	12
1300/1220	933	1746	2558	3372	4184	4995	16	8	40	12
1500/1400	1433	2625	3817	5009	6201	7393	20	10	50	12
1800/1700	1730	3166	4602	6038	7474	8910	20	10	50	16
2000/1880	2450	4280	6110	7940	9770	11600	20	15	60	12
2200/2080	2700	4720	6740	8760	10780	12800	20	15	60	12
2500/2380	2960	5240	7520	9800	12080	14360	20	15	60	16

Double walled casing (CD-2)



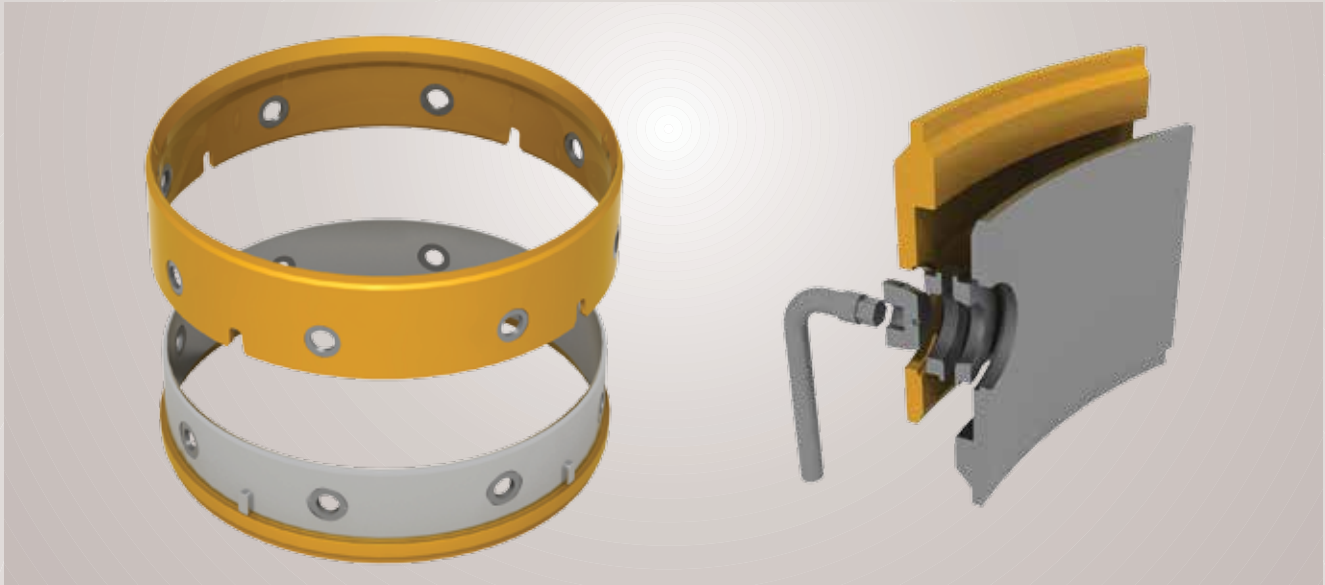
Single walled casing (CS-1)



Note: Special production is possible according to requirement

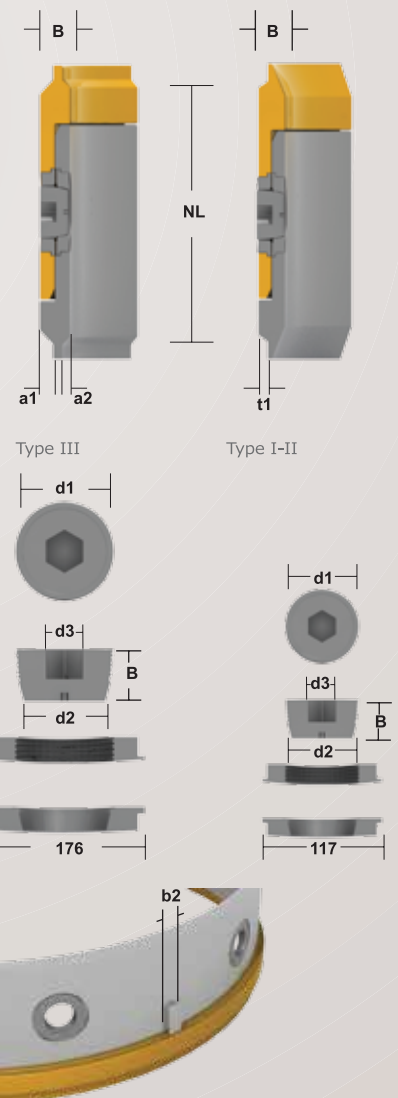
Auxiliary Equipment

Casing Joints (CD)



Double wall joint (CD-2) Single wall joint (CS-1)

D1/D2 (mm)	Dimensions			Conical Bolt and Insert		Wedge	
	NL (mm)	B (mm)	Weight (kg)	Quantity (nos)	Type	Quantity (nos)	b2 (mm)
620/540	340	40	179	8	I	4	40
750/670	340	40	218	10	I	4	40
880/800	340	40	261	10	I	4	40
1000/920	340	40	300	10	I	4	40
1180/1100	340	40	355	12	I	4	40
1200/1120	340	40	375	12	I	4	40
1300/1220	340	40	393	12	I	4	40
1500/1400	490	50	827	12	II	4	60
1800/1700	490	50	998	16	II	4	60
2000/1880	560	60	1520	12	III	6	90
2200/2080	560	60	1670	12	III	6	90
2500/2380	560	60	1800	16	III	9	90



Conical Bolt

Type	d1 (mm)	d2 (mm)	d3 (mm)	B (mm)	Weight (kg)
I	75	60	SQ 28	40	1.0
II	75	60	SQ 28	50	1.1
III	100	82	HEX 41	60	3.2

Note: Special production is possible according to requirement

Auxiliary Equipment

Casing Driver (DA)

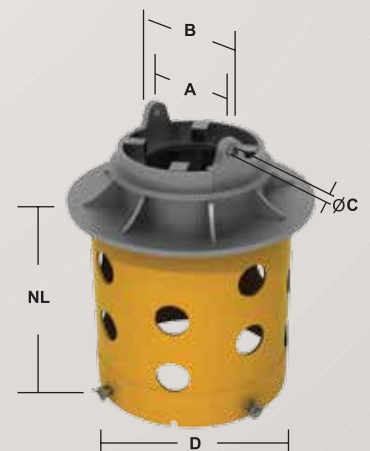


Main Application:

The function of casing driver adaptor is to transmit the power and moments created by gear box through the rotary and casing properly while they are being driven into ground.

OD/ID (mm)	Weight (kg)
620/600	375
750/670	482
880/800	646
1000/920	765
1180/1100	912
1200/1120	1.010
1300/1220	1.222
1500/1400	1.448
1800/1700	1.509
2000/1880	2.403
2200/2080	2.736
2500/2380	3.227

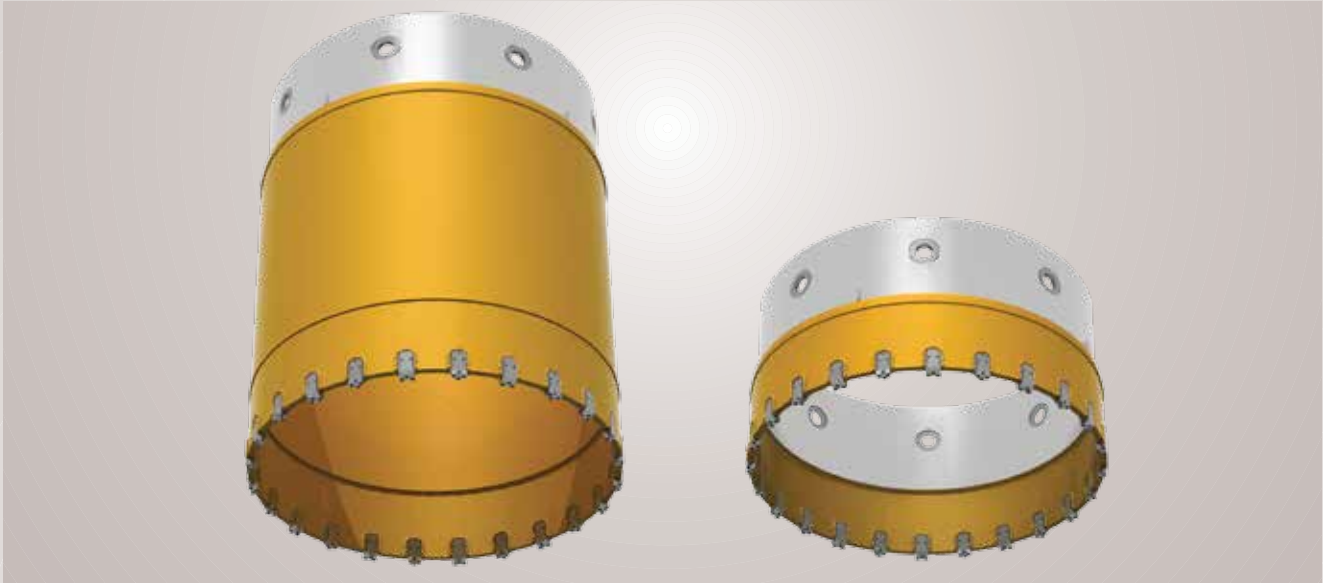
Rig type	Dimension (mm)		
	A	B	C
SR 60	555	666	50
SR 70	575	685	60



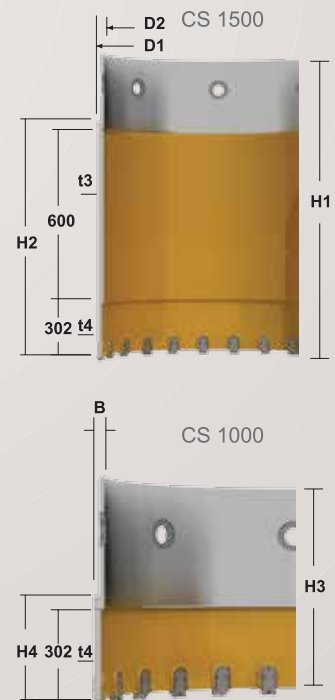
Note: Special production is possible according to different rig type and requirement

Auxiliary Equipment

Casing Shoes (CS)



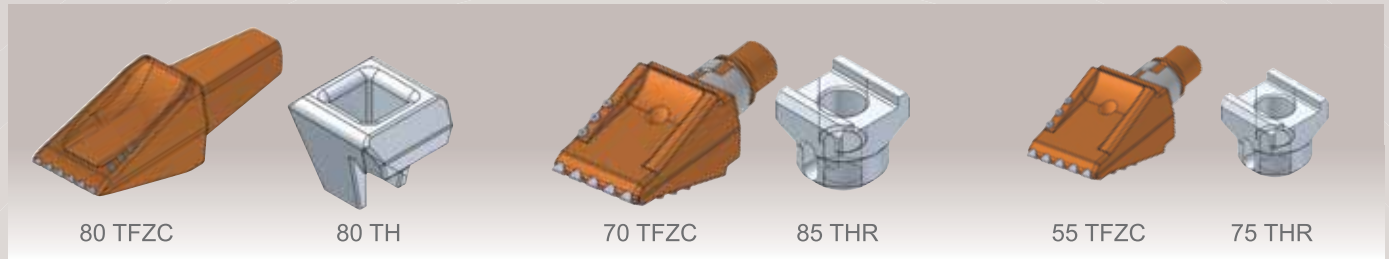
Long Version (CS 1500)						Short Version (CS 1000)		
D1/D2 (mm)	H1 (mm)	H2 (mm)	t3 / t4 (mm)	Weight (kg)	Cutting bits (nos)	H3 (mm)	H4 (mm)	Weight (kg)
620/540	1.186	954	40 / 35	590	16	586	354	339
750/670	1.186	954	40 / 35	725	16	586	354	418
880/800	1.186	954	40 / 35	855	18	586	354	491
1000/920	1.186	954	40 / 35	975	18	586	354	560
1180/1100	1.186	954	40 / 35	1.160	20	586	354	665
1200/1120	1.186	954	40 / 35	1.177	20	586	354	677
1300/1220	1.186	954	40 / 35	1.275	24	586	354	733
1500/1400	1.321	969	50 / 45	2.005	30	721	369	1340
1800/1700	1.321	969	50 / 45	2.420	36	721	369	1618
2000/1880	1.402	1.002	60 / 55	3.290	36	802	402	2350
2200/2080	1.402	1.002	60 / 55	3.640	40	802	402	2580
2500/2380	1.402	1.002	60 / 55	4.110	46	802	402	2850



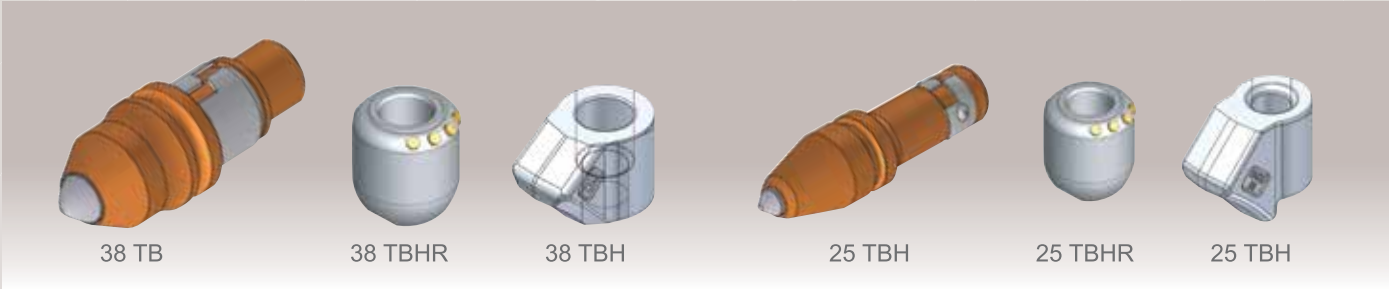
Note: Special production is possible according to requirement

Wear Parts

TFZ Type Cutting Tools



Tungsten Carbide Bits



Weld on Block



Replaceable Block

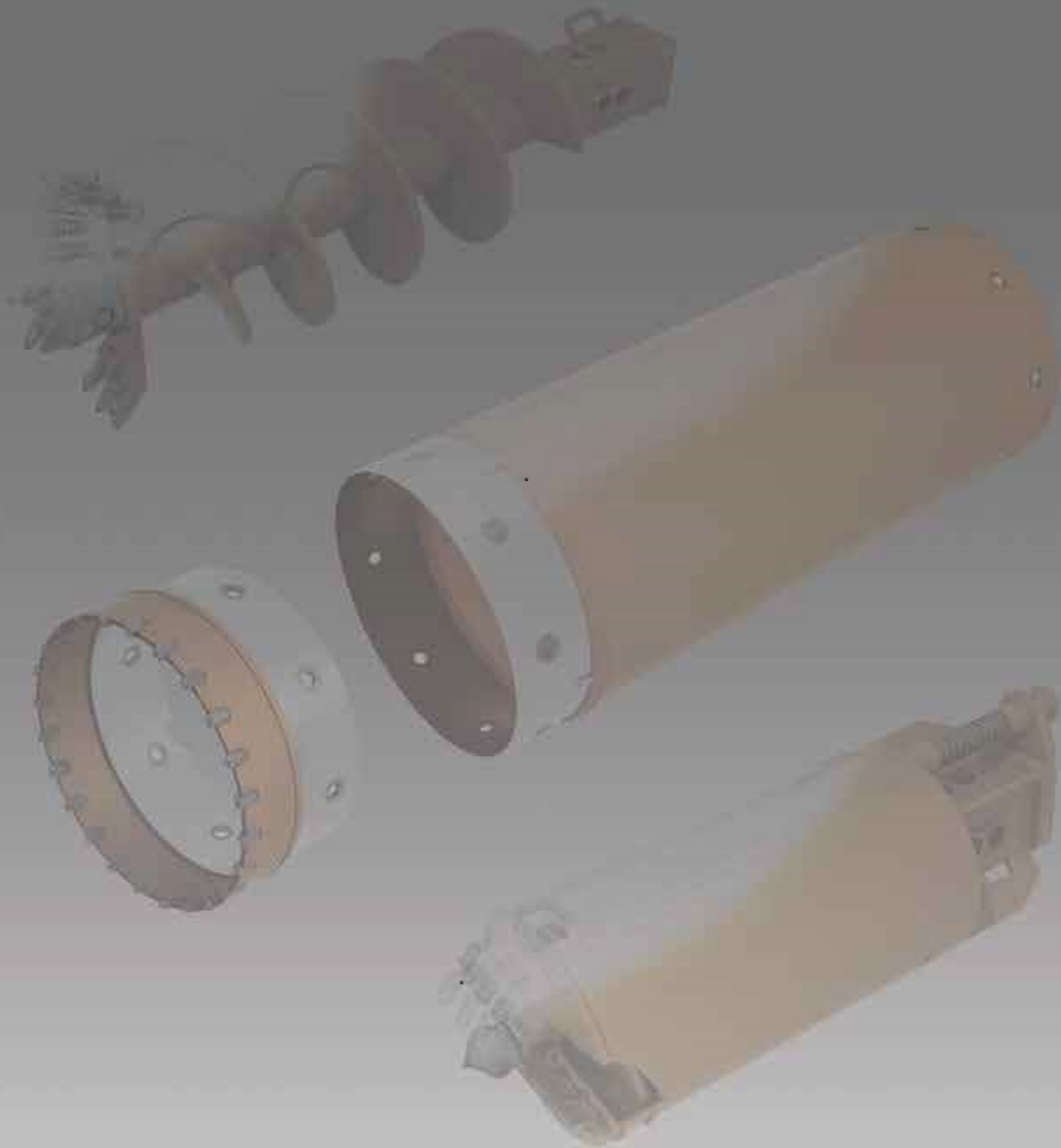


Pilot Bit



Kelly Box





German Dredger Services GmbH
Brandstücken 18
22549 Hamburg

Tel.: +49 (0) 40 870 80 19 - 10 Fax:
+49 (0) 40 870 80 19 - 13

E- Mail: info@german-dredger.com
Web: www.german-dredger.com